



Research output #1 in ESA

Carlo Azzarri

IFPRI

Survey design meeting, Dar es Salaam, January 28, 2013



SEE THE
FEED THE
CHANGE **FUTURE**

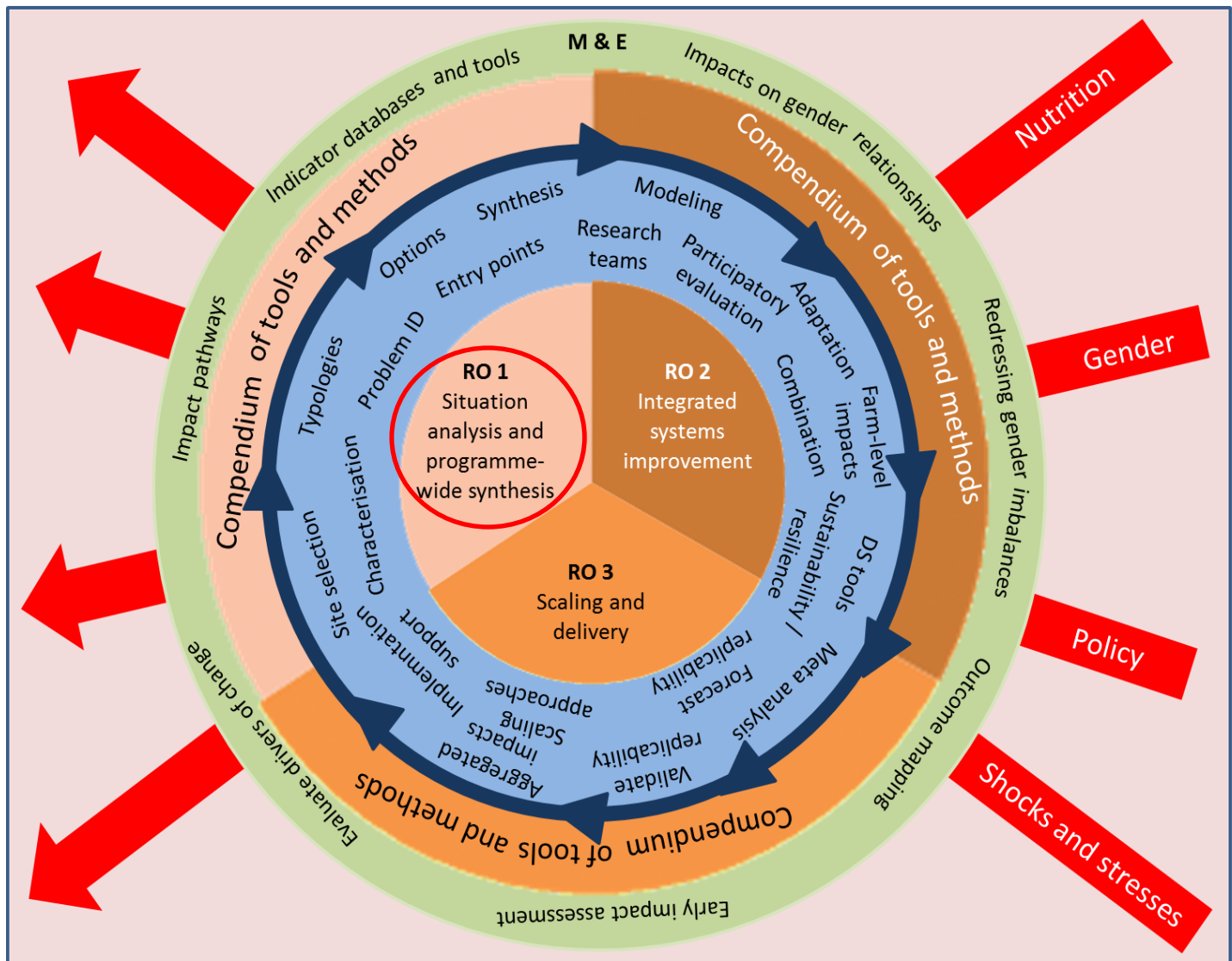




Introduction

- What is RO1
- Why it is important
- What has been done
- What needs to be done
- Suggestions

What is RO1





What is RO1: Situation analysis and program-wide synthesis

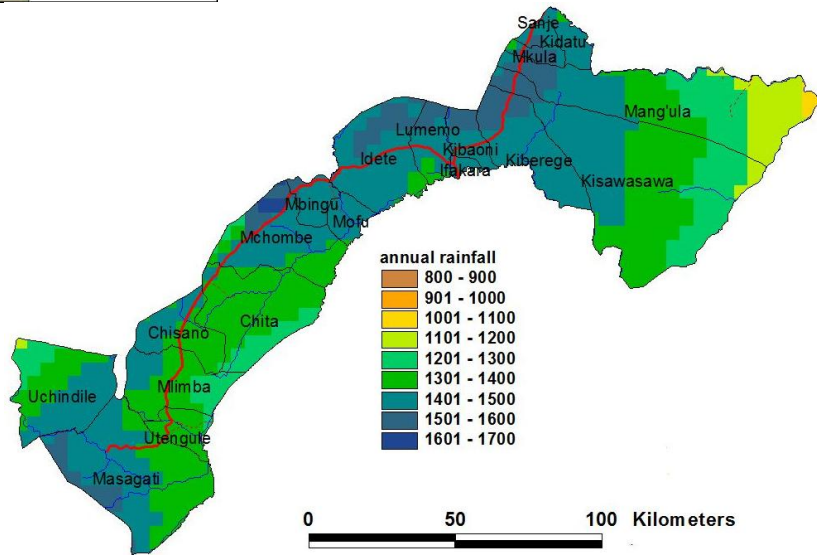
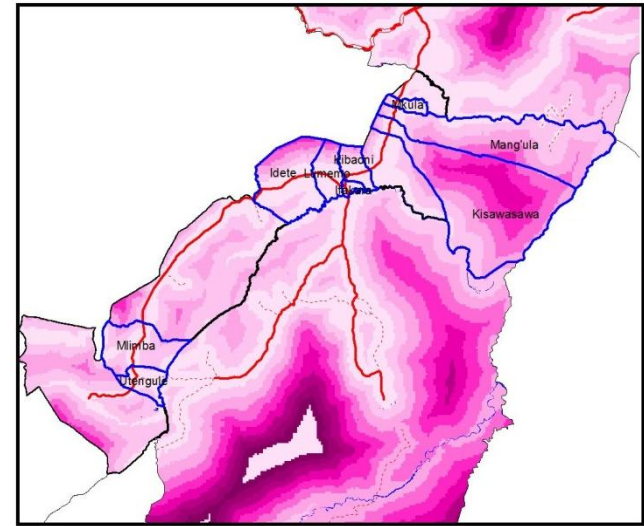
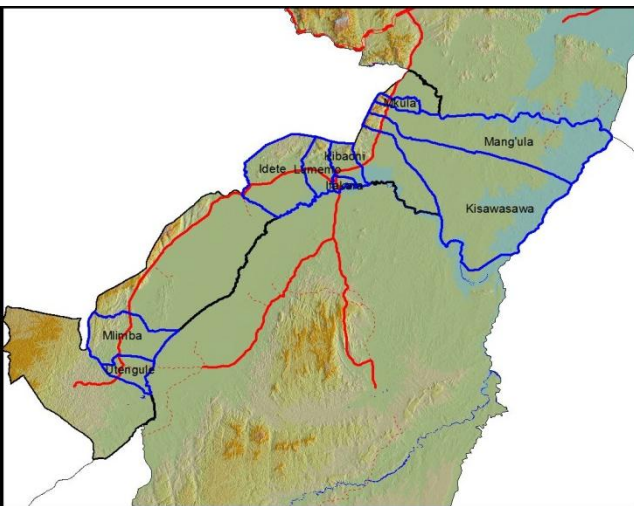
Activity	Approach	Responsibility	Funding	Timing
1. Site stratification	GIS	IFPRI	IFPRI	Dec 2012
2. Site selection	GIS & field	Research teams & IFPRI	IITA & IFPRI	Jan 2013
3. Farming systems	Qualitative & exist. data	Research teams & IFPRI	IITA & IFPRI	Feb 2013
4. Entry points	Expert opinions	Research teams & IFPRI	IFPRI & IITA	Mar-Apr 2013
5. Innovations	Inventory	Research teams	IITA & IFPRI	End of fiscal yr.
6. Ex-ante analysis	Technology analysis	IITA and RTs, IFPRI?	IITA	Jan 2013
7. Priority for integration	System typology	IITA and RTs, IFPRI?	?	Jan 2013
8. Co-learning at AR4D	M&E	IFPRI & IITA	IFPRI & IITA	End of fiscal yr.



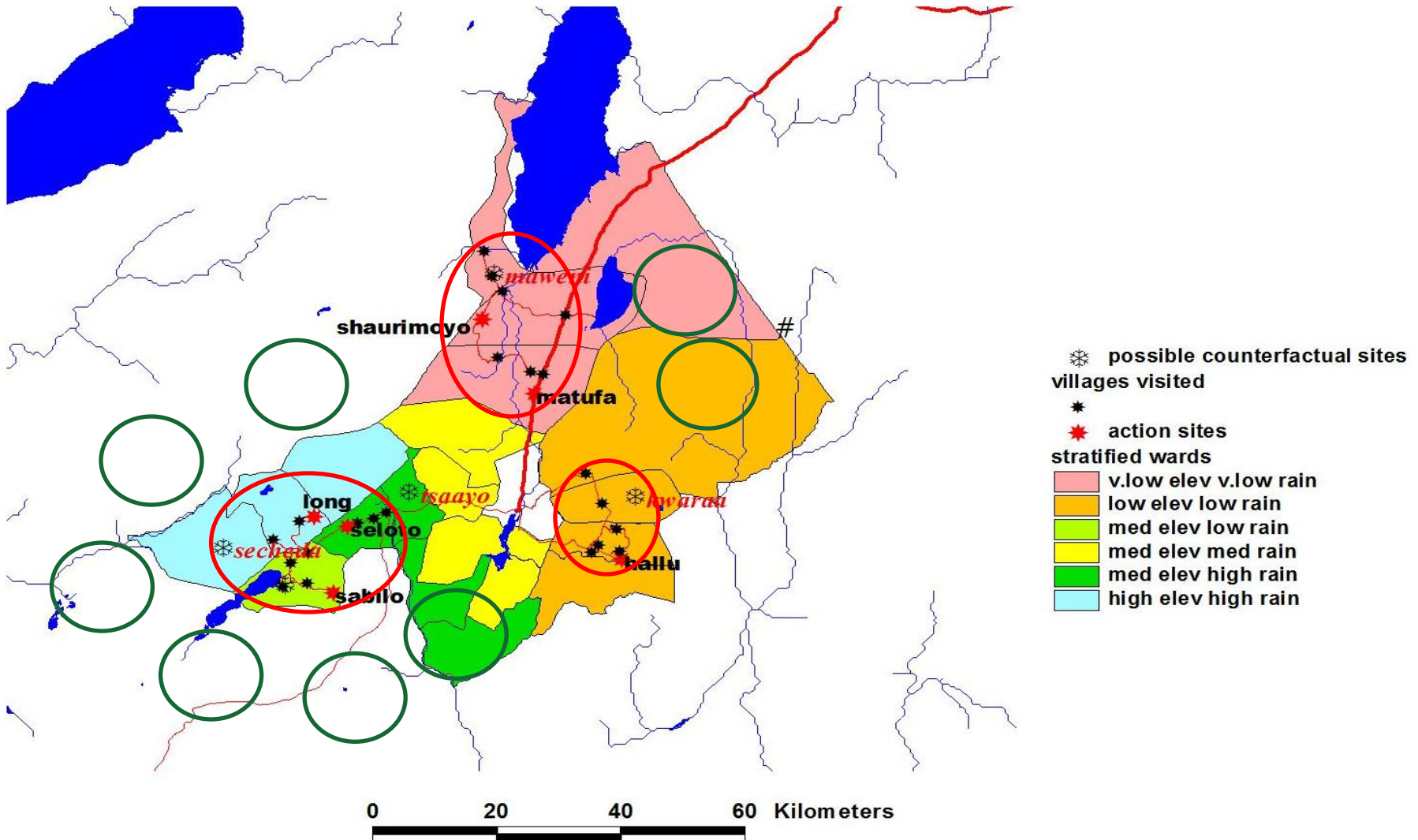
Why it is important

- Informs research teams and their activities
- Provides data inputs for farming systems and ex-ante modeling
- Identifies and prioritize innovations
- Ensures that interventions are aligned to priorities
- Supports outcome mapping and progress report
- Encourages cross-site co-learning
- Provides baseline data for impact evaluation

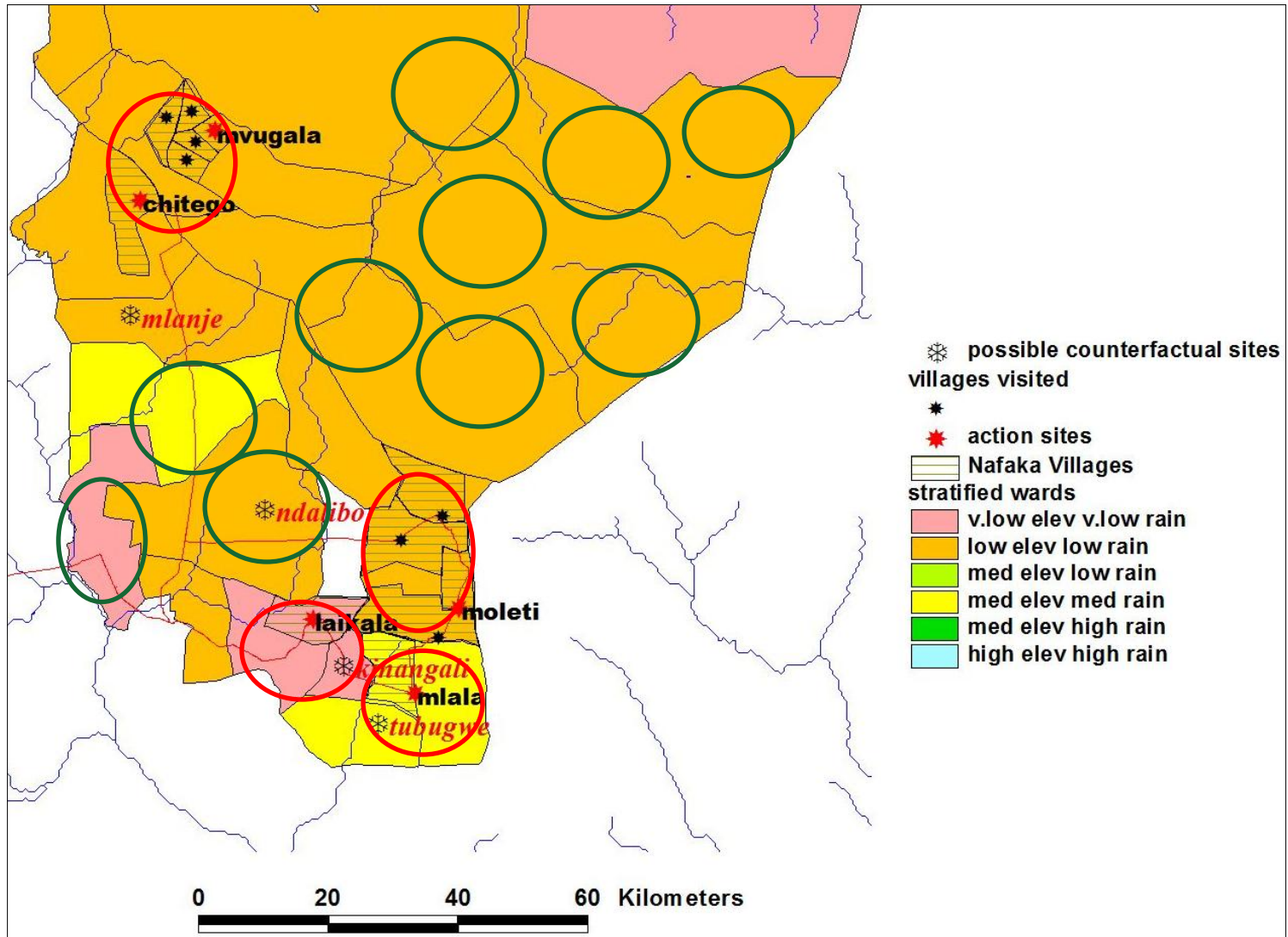
What has been done: GIS and stratification



What has been done: site selection

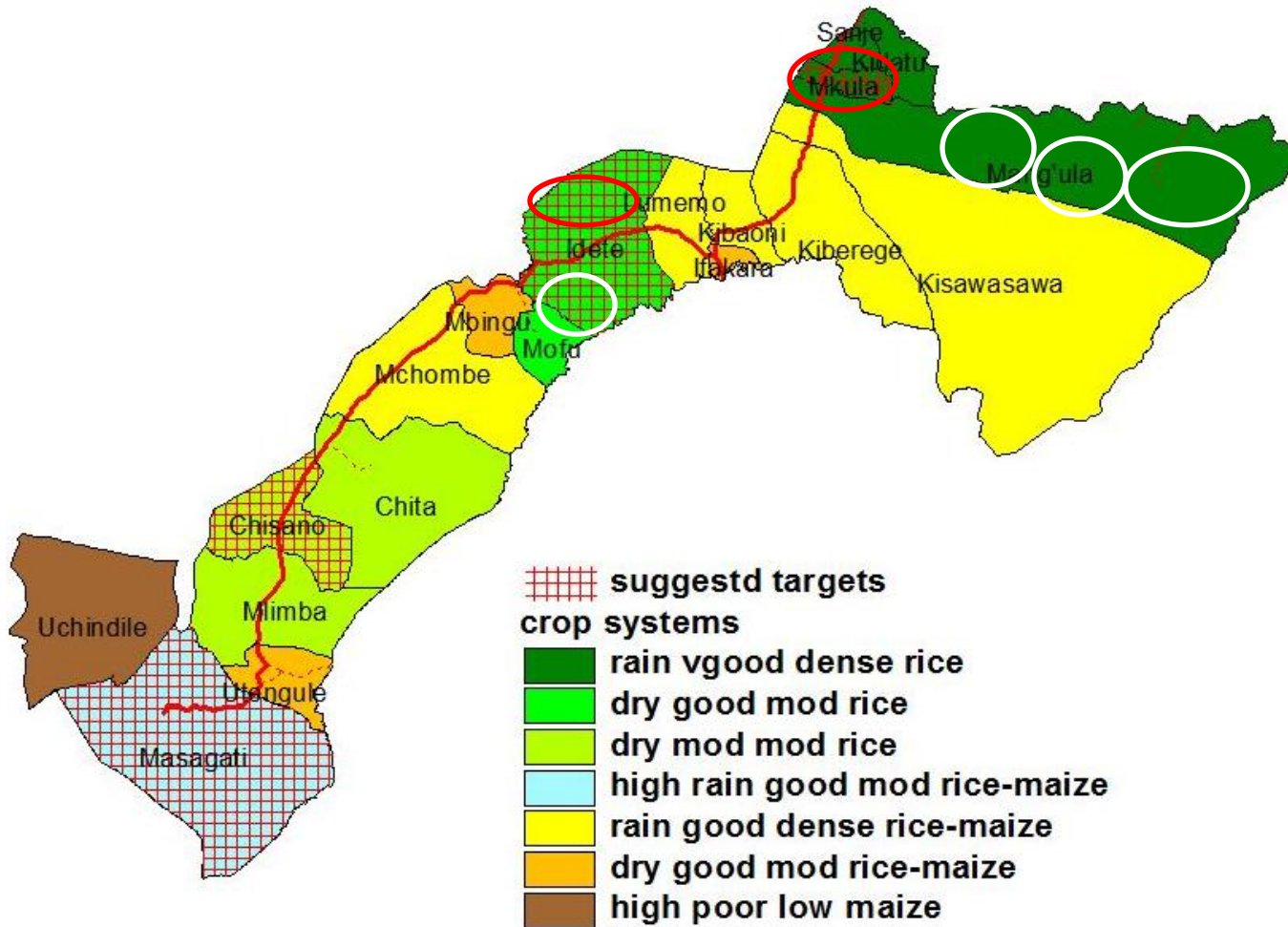


What has been done: site selection





What has been done: site selection

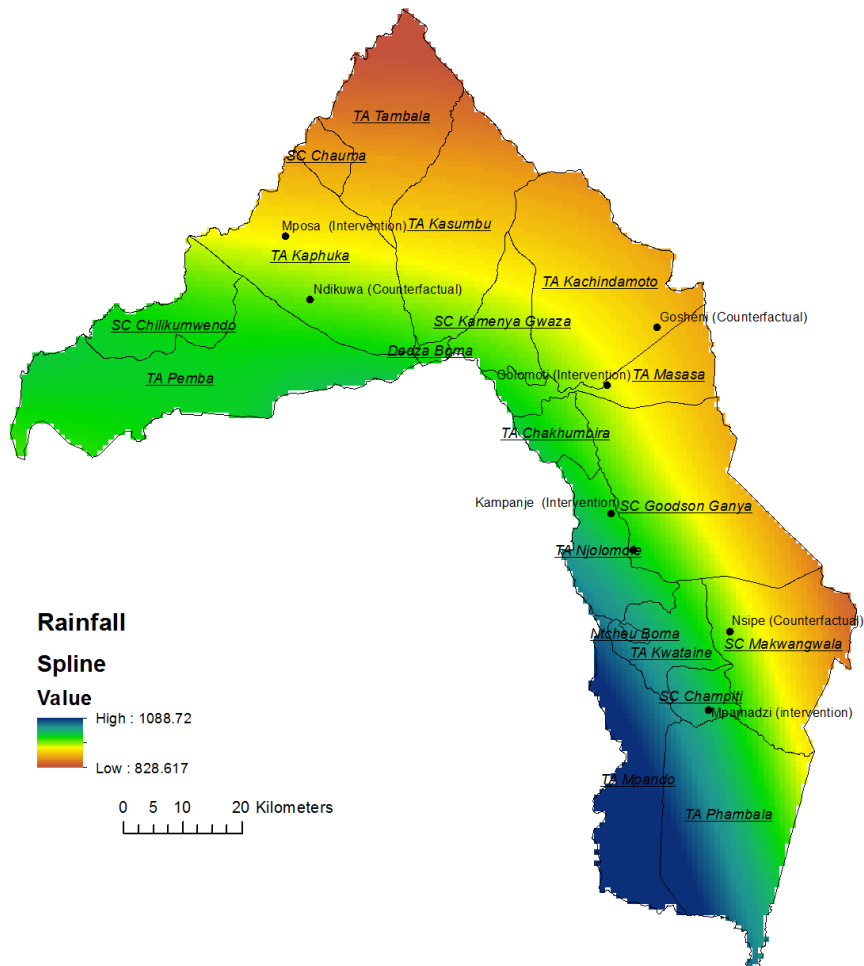
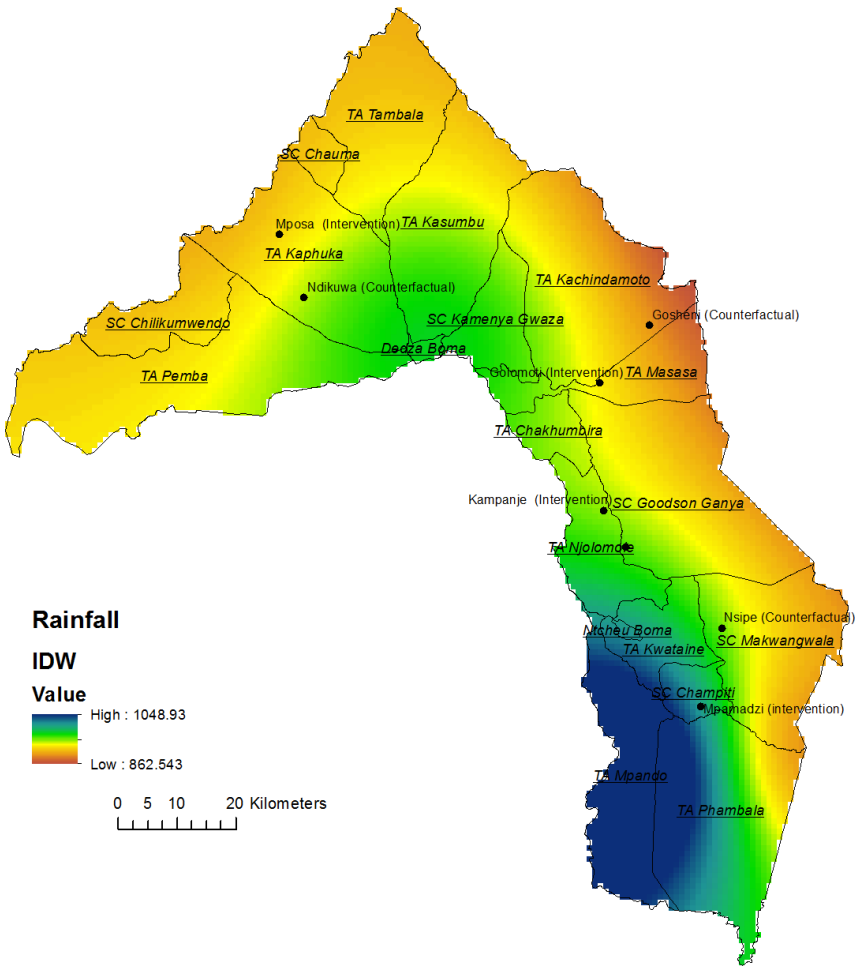


0 50 100 Kilometers



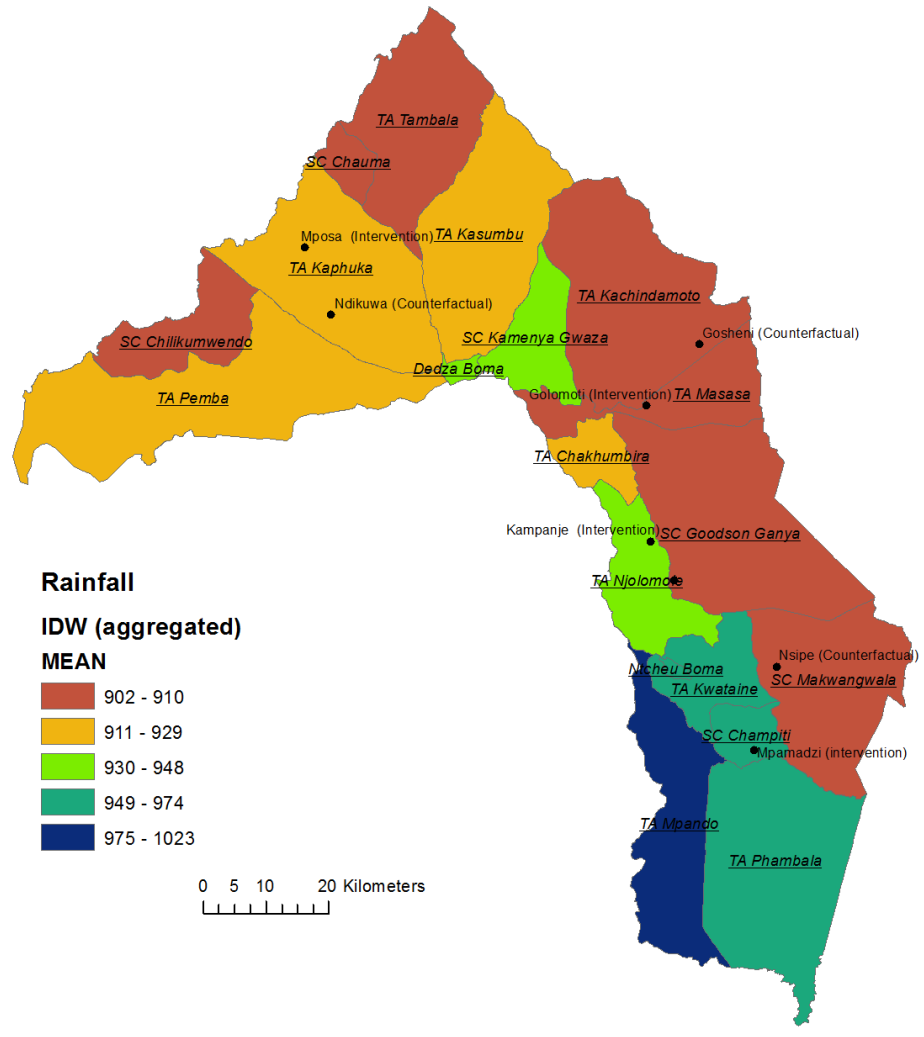
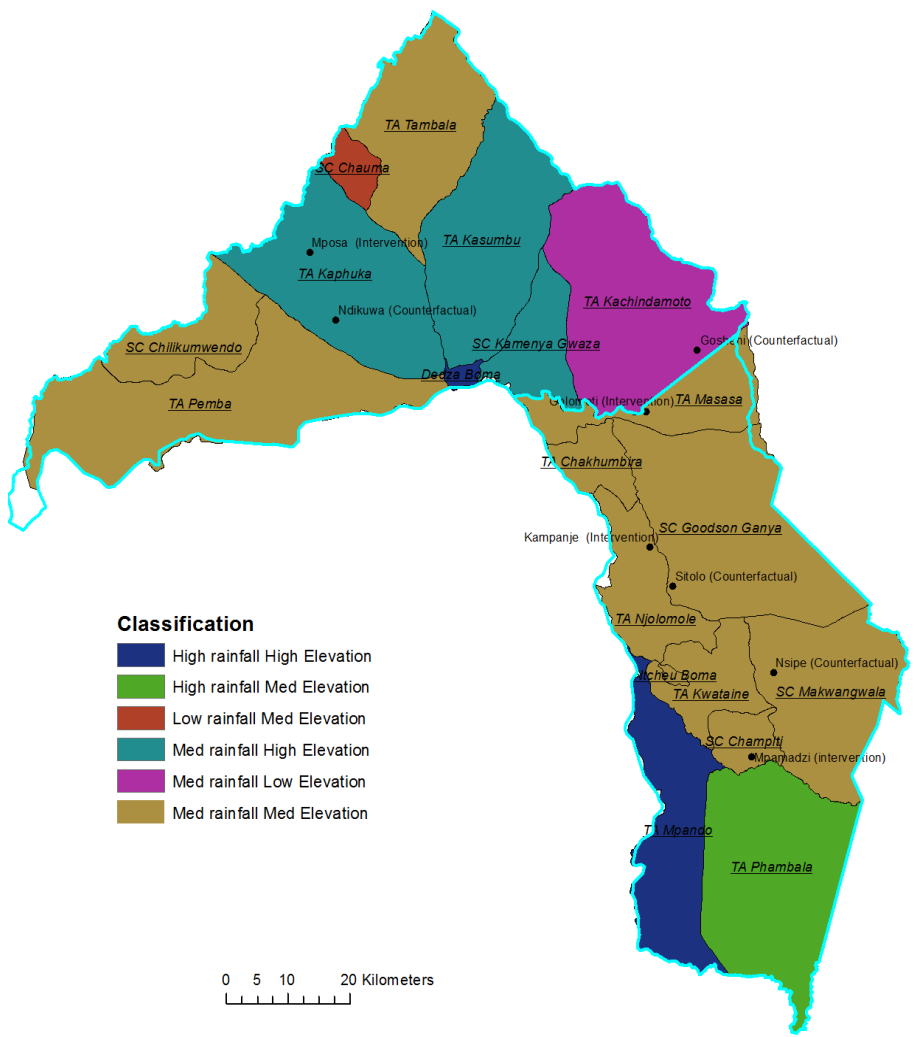


What has been done: site re-selection





What has been done: site re-selection





What has been done: field visits





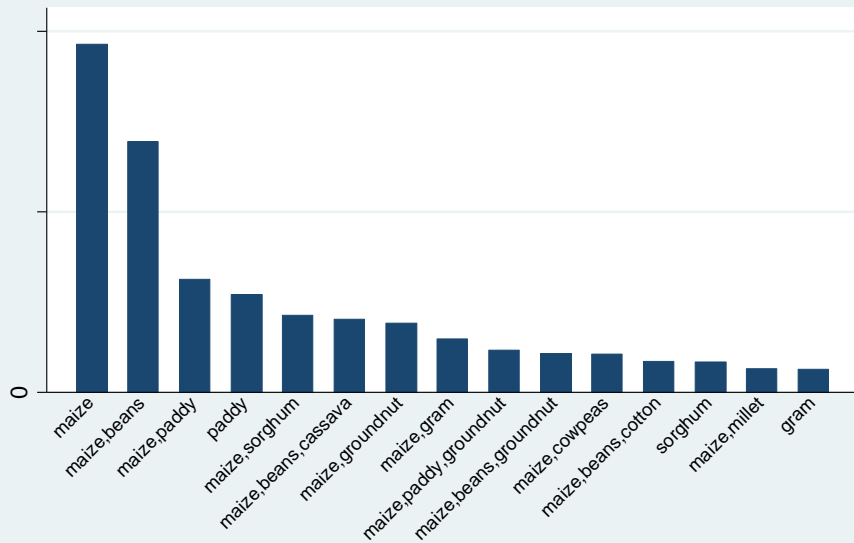
What has been done: innovations' inventory

EAST AND SOUTHERN AFRICA				
LIVESTOCK		15 PROJECTS		
<i>Project/Initiative name</i>	<i>Lead agency</i>	<i>Funding agency</i>	<i>URL/contact for more info</i>	<i>Thematic focus</i>
Credit in beef value chains	ILRI	IFAD	Derek Baker (d.baker@cgiar.org)	Beef value chains
Beef value chain enhancement	ILRI	ACIAR	Derek Baker (d.baker@cgiar.org)	Improved participation of smallholders in beef value chains
Livestock data project	ILRI	World Bank / BMGF	Derek Baker (d.baker@cgiar.org)	Improved livestock data services
More milk by and for the poor	ILRI	Irish Aid	Amos Amore (a.amore@cgiar.org)	Dairy markets and policy
EADDP II	ILRI	BMGF	Isabelle Baltenweck (i.baltenweck@cgiar.org)	Business development service hubs (dairy)
IMGoats	ILRI	IFAD/EU	Siboniso Moyo (s.moyo@cgiar.org)	Goat value chains Innovation systems approaches
USAid East Africa Livestock Marketing and Trade	TBD?	USAid		Regional livestock trade and markets Resilience and productivity through market growth
School milk feeding program		Processors, parents, NGOs	Tanzania Dairy Board	Improving nutrition and food safety

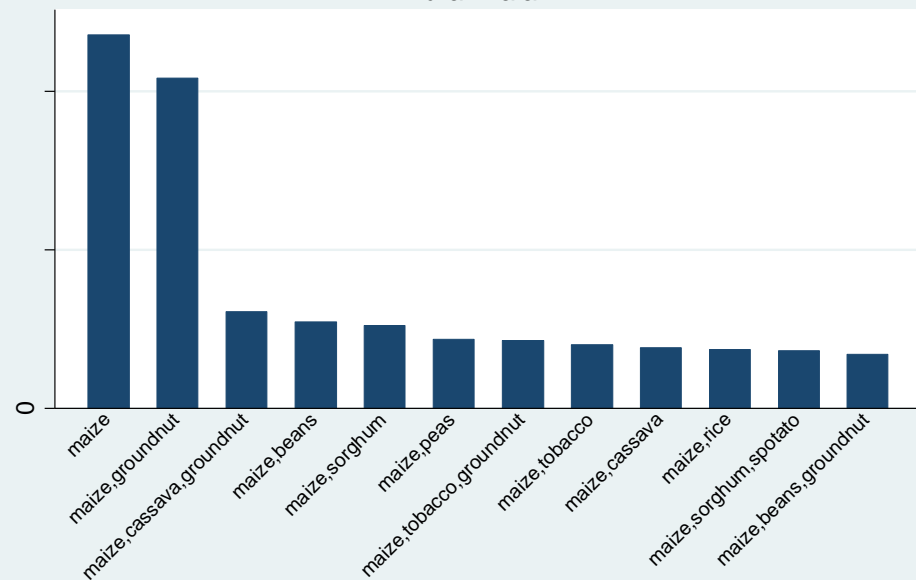


What needs to be done

of households growing
rural Tanzania

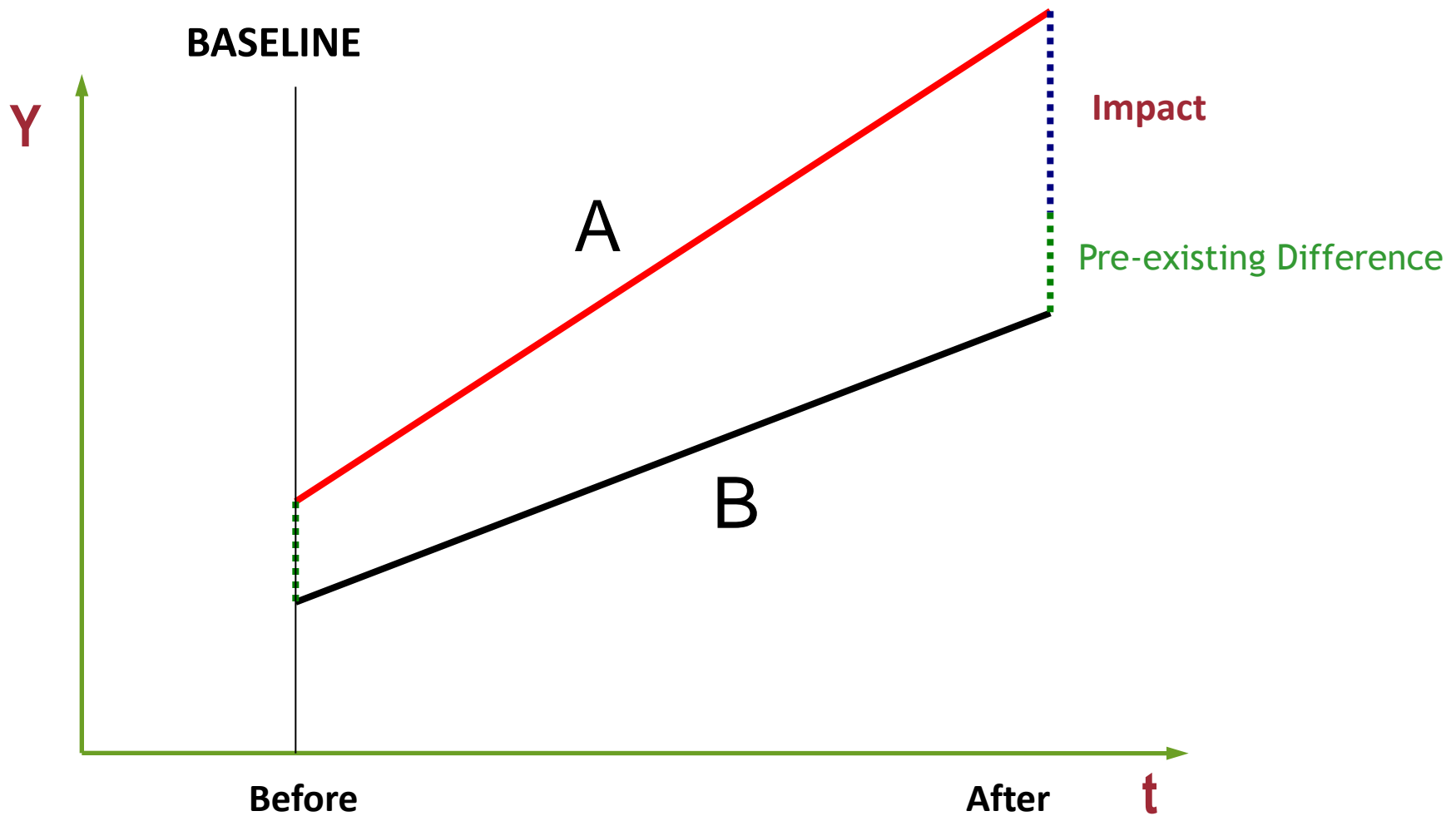


of households growing
rural Malawi





What needs to be done





Suggestions?



Africa Research in Sustainable Intensification for the Next Generation

africa-rising.net



AVRDC
The World Vegetable Center

