



# FTF indicators and PMMT in ESA

*IFPRI M&E team*

ESA Review and Planning Meeting

9-11 September 2014

Arusha, Tanzania





# Project Mapping and Monitoring Tool

---

Scope and Purpose

Major Components

<http://dev.harvestchoice.org/africarising/>

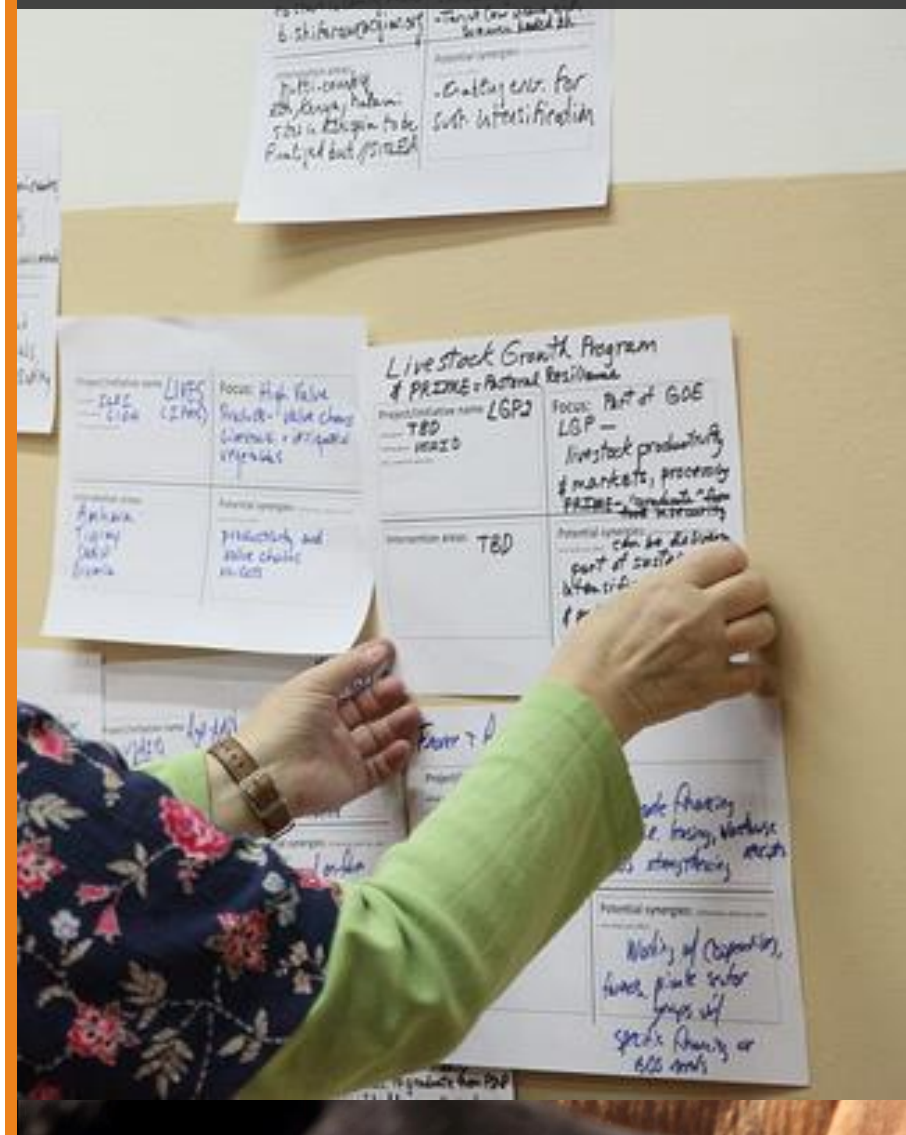


## Evaluation design is hard. Monitoring is painful...

Need for a *simple, flexible* and *engaging* tool to report on program performance and capture decisions/adjustments made over 5-year program lifecycle:

- Baseline site characteristics
- Site stratification and selection
- Intervention details
- Bi-annual FtF (and other project-specific) indicators
- Surveys and evaluation results
- Links to intermediary and final output (incl. primary data)

Aligning project goals, 2012.





Interviewing a farmer, 2013.



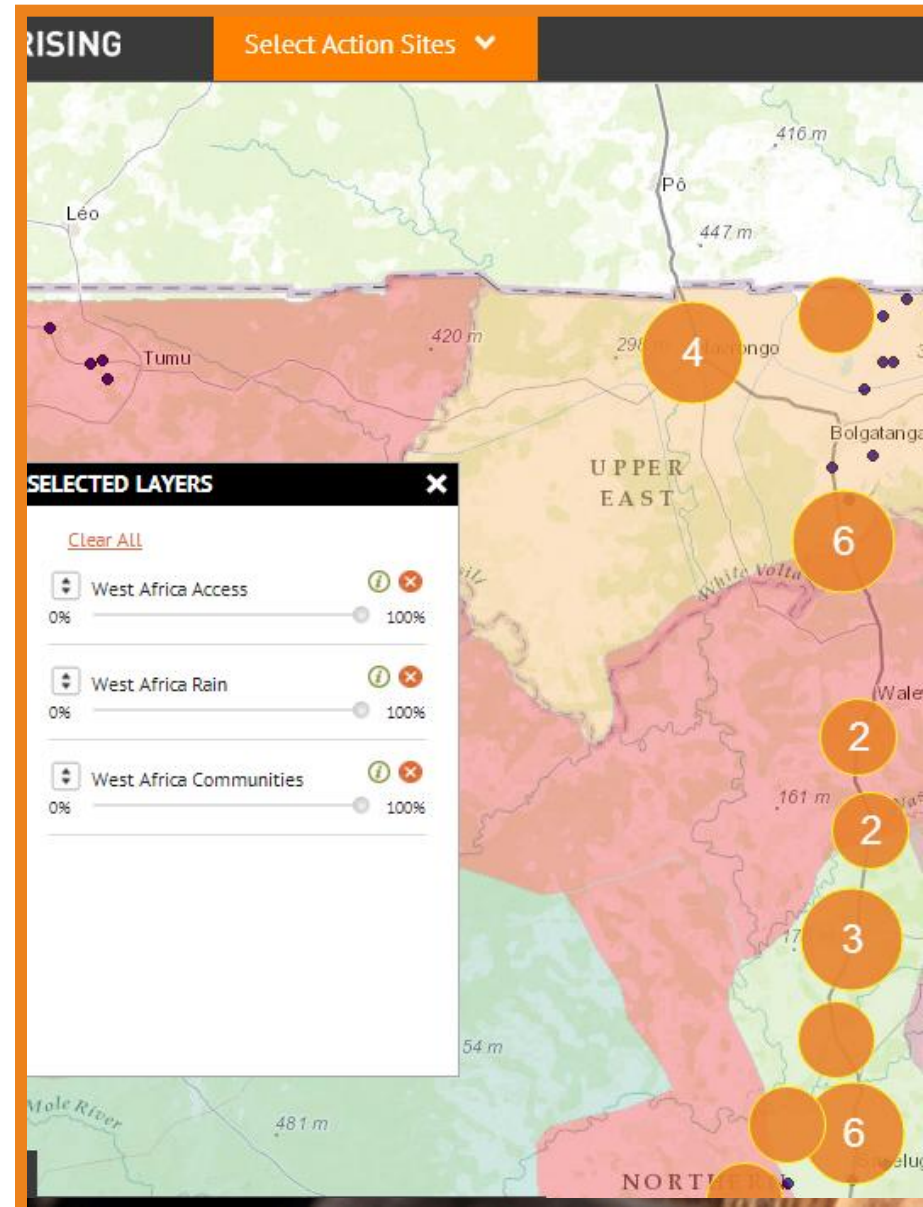
## PMMT Design Principles

- MSEXcel revisions *no more!*
- Grow organically based on evolving M&E needs and partners' feedback and capacity – do *not* overbuild
- Flexible, adapted to most M&E designs
- Simple to deploy in the field, no strong dependence on high-speed Internet connectivity
- Leverage existing CGIAR tools and repositories
- Openness (to and from 3<sup>rd</sup> party applications and databases)



# Powerful Spatial Visualization

**M&E site stratification & selection.** Powerful spatial visualization features to provide rich contextual information, and overlays of local biophysical characteristics with socio-economic data in support of action/control site selection process.





# Simplified Project Performance Monitoring

**Streamlined indicator data entry and reporting.** Familiar, secure interface for data entry with pre-set list of indicators help clarify reporting requirements. Data import/export tools for multiple end-uses.

## Activity 3.1.1. Community mobilization and establishment of agricultural research

**Contact name:**N/A

**Contact email:**N/A

**Last revised:**2014-06-23T00:00:00

**Last revised by:**administrator

**Sites:**

Arigu, Basigu, Bonia, Gia, Karemiga, Kukua, Laogri, Nabogu, Namiyila, Nasia, Nyangua, Pigu, SH

**Technologies:**

N/A

**Partners:**

IITA, MOFA, SARI

**Indicator**

4.5.1(24) ▼

Numbers of Policies/Regulations/Administrative Procedures in e

Measure	2012			
	Baseline	Target	Actual	Target
Disaggregates Not Available	-	-	-	-
Stage 1: Analyzed	-	3	3	2
Stage 2: Drafted and presented for public/sta...	-	4	4	-
Stage 3: Presented for legislation/deGREE	-	2	2	-
Stage 4: Passed/approved	-	6	6	-
Stage 5: Passed for which implementation ha...	-	7	7	-



# Project Mapping and Monitoring Tool Walk-through

---

Mapping and Visualization

Monitoring and Reporting

Training Resources

<http://dev.harvestchoice.org/africarising/>

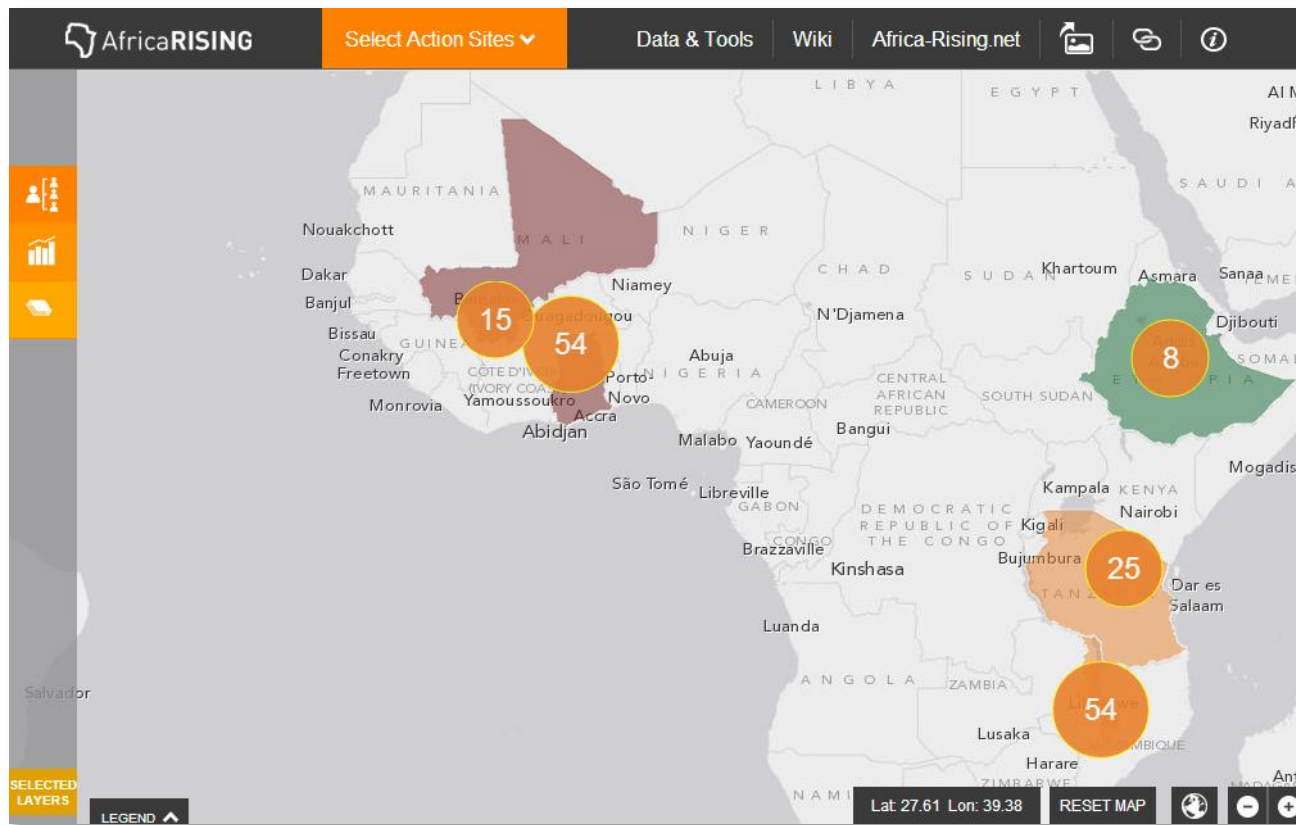


## Mapping & Visualization

**Top pane:** header toolbar with quick site navigation and filtering

**Bottom pane:** map tools, rendering options (layer legend, base layers, administrative boundaries)

**Left pane:** data toolbar (contextual overlays)



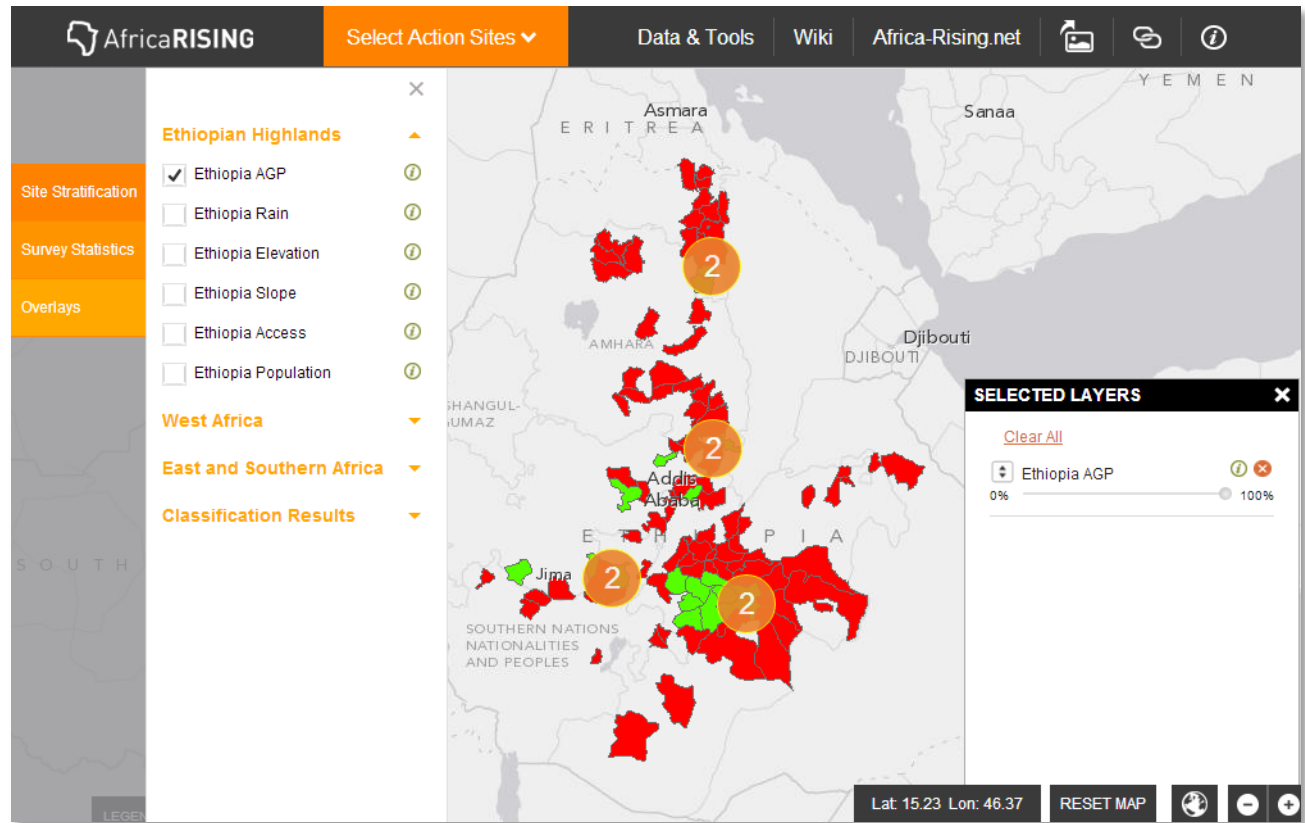
**Map:** Africa RISING megasites and community clusters.





## Data Toolbar: Contextual Overlays

High-res intermediary  
and final  
stratification/  
segmentation layers  
AR baseline survey  
results (forthcoming)  
and other socio-  
economic indicators  
HarvestChoice/IFPRI  
raster collection for  
sub-Saharan Africa  
(over 600 layers)



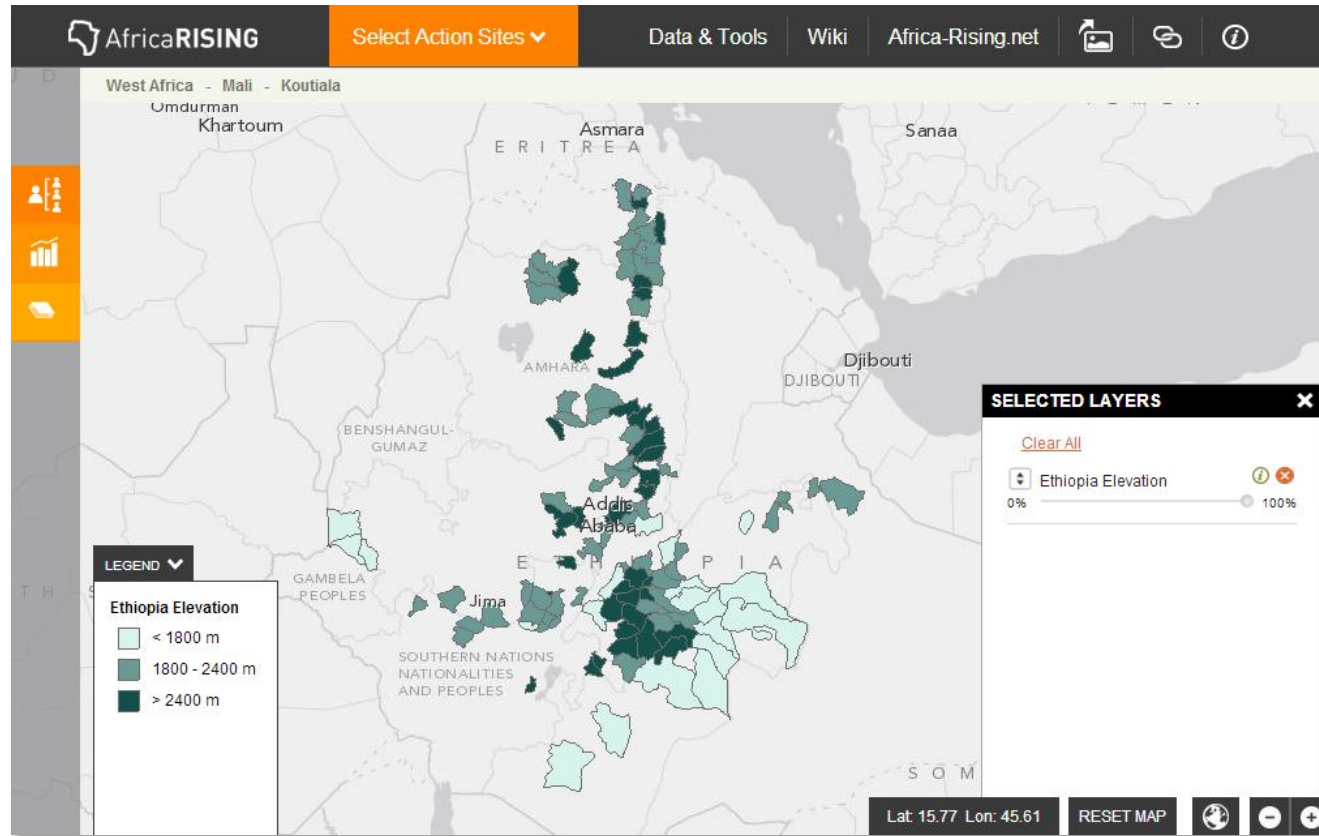


## Data Toolbar: Selected Layer Panel

Access to full layer  
meta-data

Re-arrange selected  
layers

Manipulate layer  
transparency



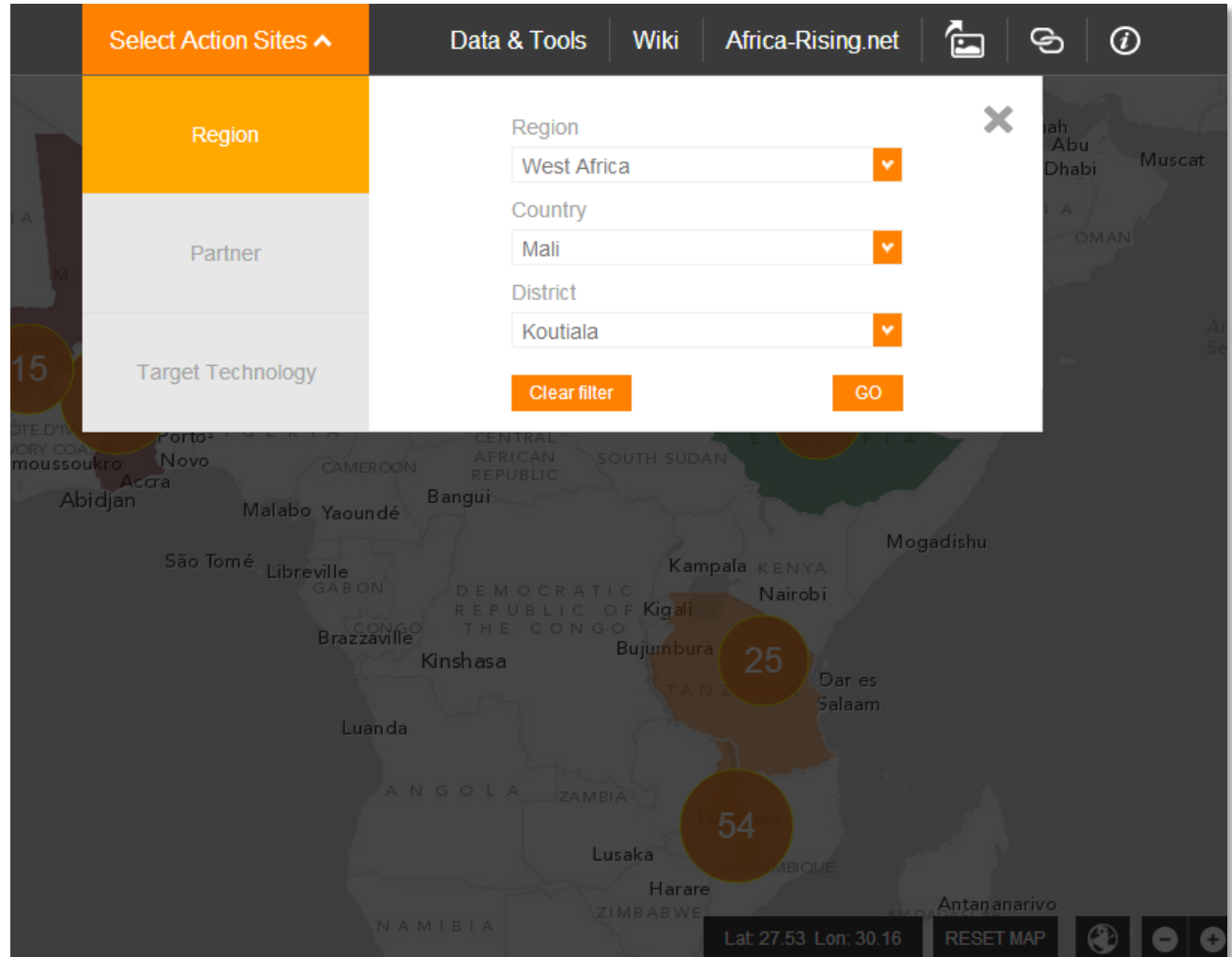


## Header Toolbar: Navigate AR Sites

Filter and zoom to AR sites by study area, target technology, or by research partner.

Access additional tools for printing and embedding map views into external sites.

Links to external AR report and data catalogs.





## Site Info Box

Navigate sites in each cluster.


Identify site names, type, contact information, and full site details.

Zoom in to specific sites.

Select Action Sites ▾ Data & Tools Wiki Africa-Rising.net

- Koutiala - Konseguela

**KONSEGUELA**

 **Megasite:** West Africa  
**Country:** Mali  
**District:** Koutiala  
**Village:** Konseguela  
**Site type:** CONTROL SITE  
**M&E Coordinator:** Haile (ad interim), Belyou  
**E-mail:** b.haile@cgiar.org

[MORE DETAILS](#)

[Zoom to](#)

Koutiala Yorosso

SIKASSO

Lat 12.42 Lon: -5.42 RESET MAP



# Research Activities Tab

Full site description

Links to individual data reports

**Selected Site**  
West Africa - Mali - Koutiala - Konseguela

**Research Activities**

**Data Reports**



CIAT International Center for Tropical Agriculture and ILRI. [Some rights reserved](#)

## Africa RISING Research Activities in Konseguela

**M&E Coordinator:** Haile (ad interim), Belyou

**E-mail:** [b.haile@cgiar.org](mailto:b.haile@cgiar.org)

**Latitude:** 12.4

**Longitude:** -5.88

**Research Partners:**

ICRISAT, WUR, FRI, IITA, MOFA, MOH, SARI, SRI, UDS, AMEDD, MOBIOM, AMASSA

**Reports:**

Activity 3.1.2. Farming systems analysis

Activity 3.1.3. Inventory innovations and identify entry poi

Activity 3.2.7 Improving farm household nutrition in Mali

Activity 3.2.8 sustainably managing natural resources and

Activity 3.2.9. Increasing farm and field productivity through technologies in Mali

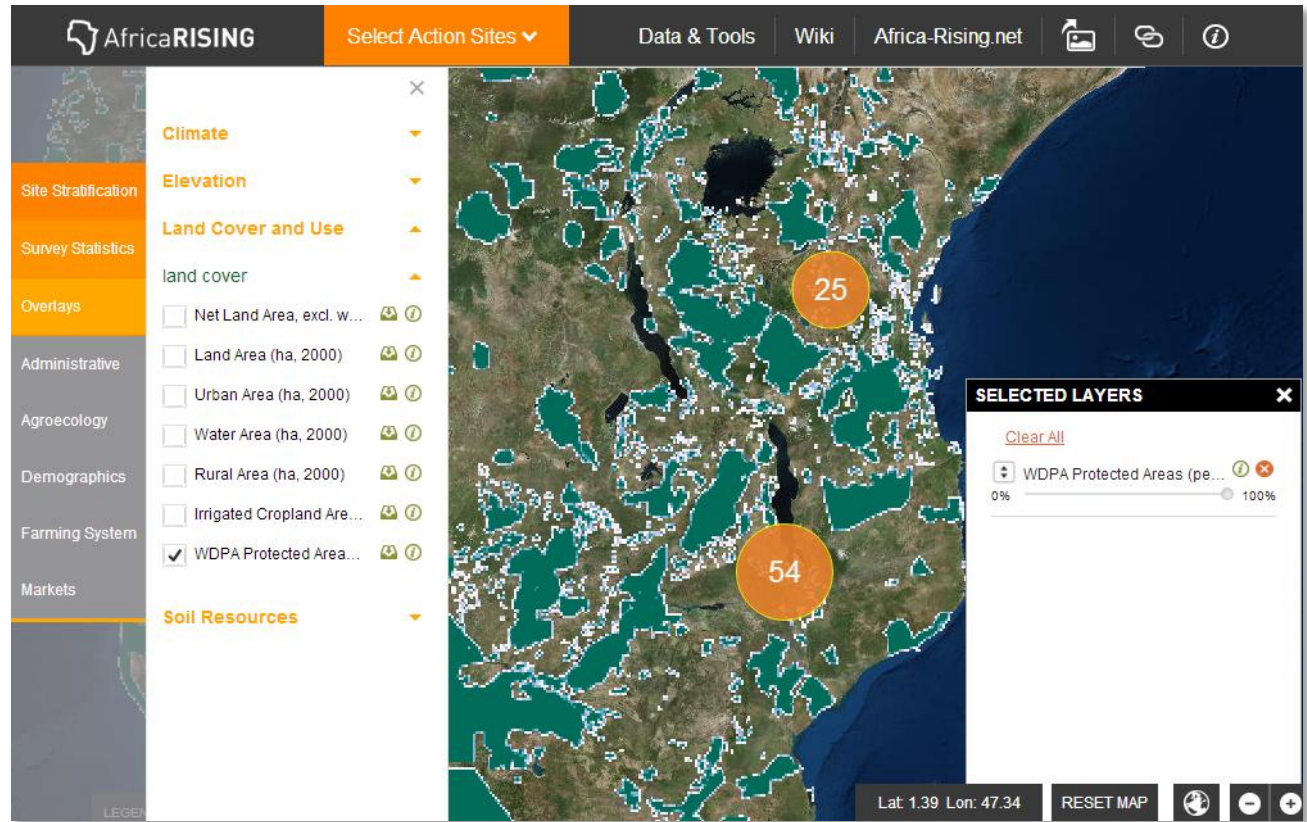
Activity 3.3.2. Testing efficiency of scaling-out and deliver

[Click here to view data](#)



## Data Toolbar: Overlays

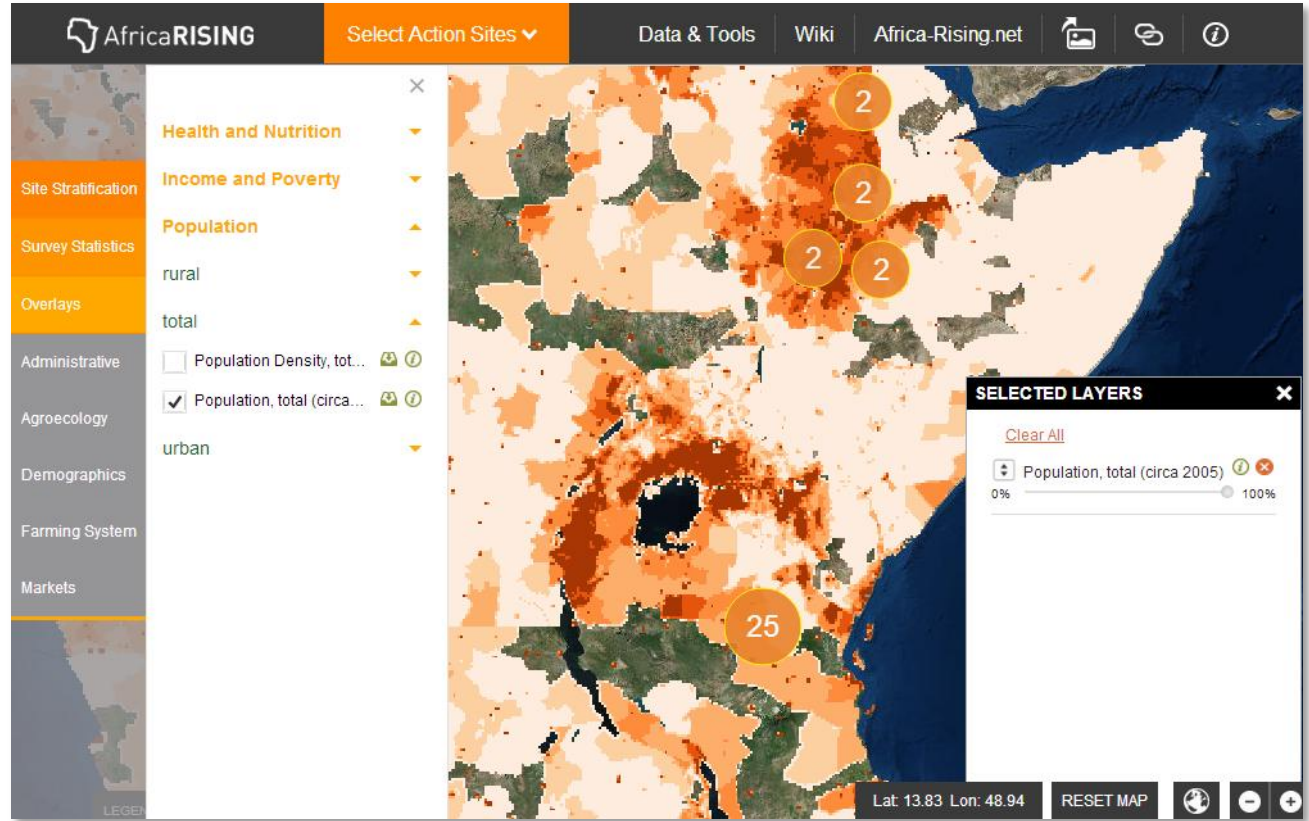
Snapshot of HarvestChoice 5-arc-minute layers for sub-Saharan Africa, also accessible at <http://apps.harvestchoice.org/mappr/> (with advanced data query tools)





Population,  
Poverty,  
Nutrition,  
Climate, Soils, etc.

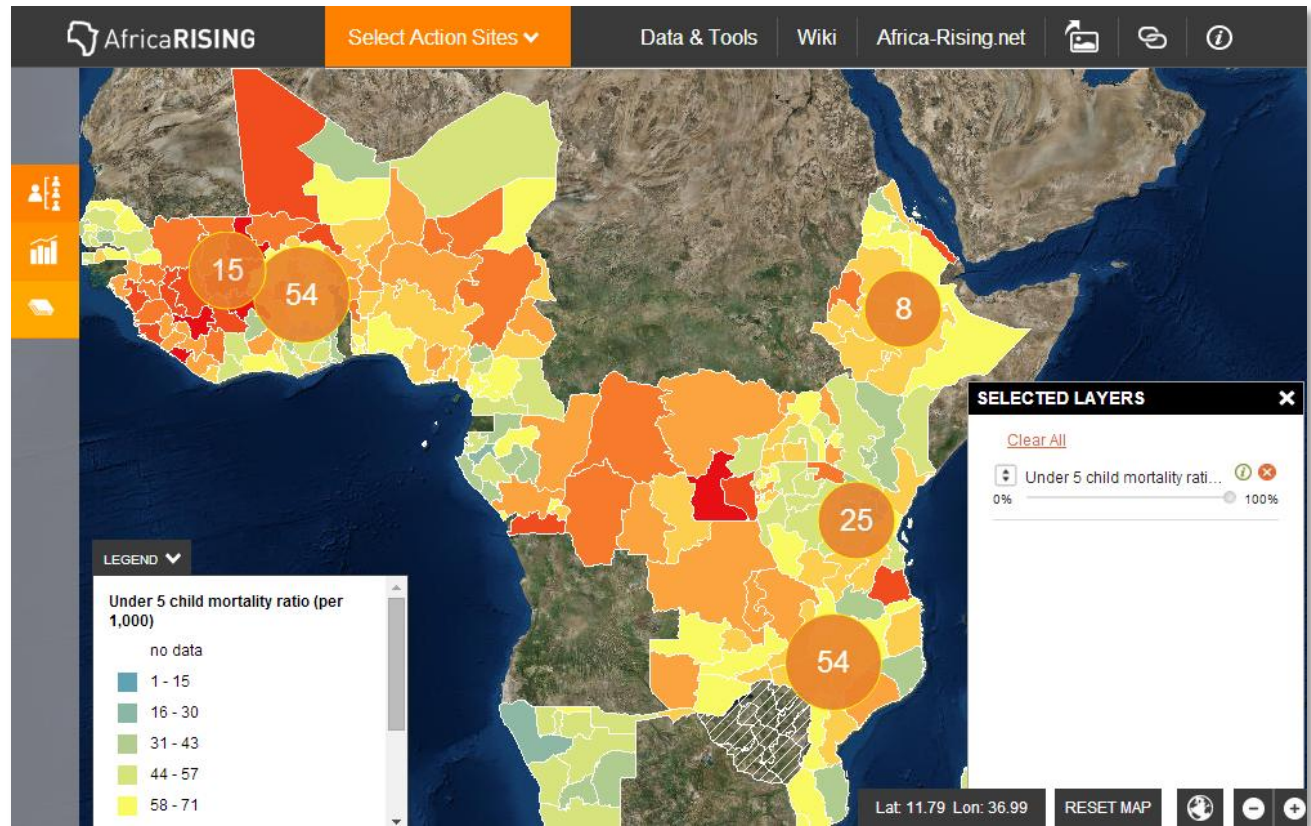
Explore AR sites in  
full context.





Contribute your own vector maps...

PMMT can incorporate contributed maps (e.g. MEASURE DHS sub-national child mortality estimates)







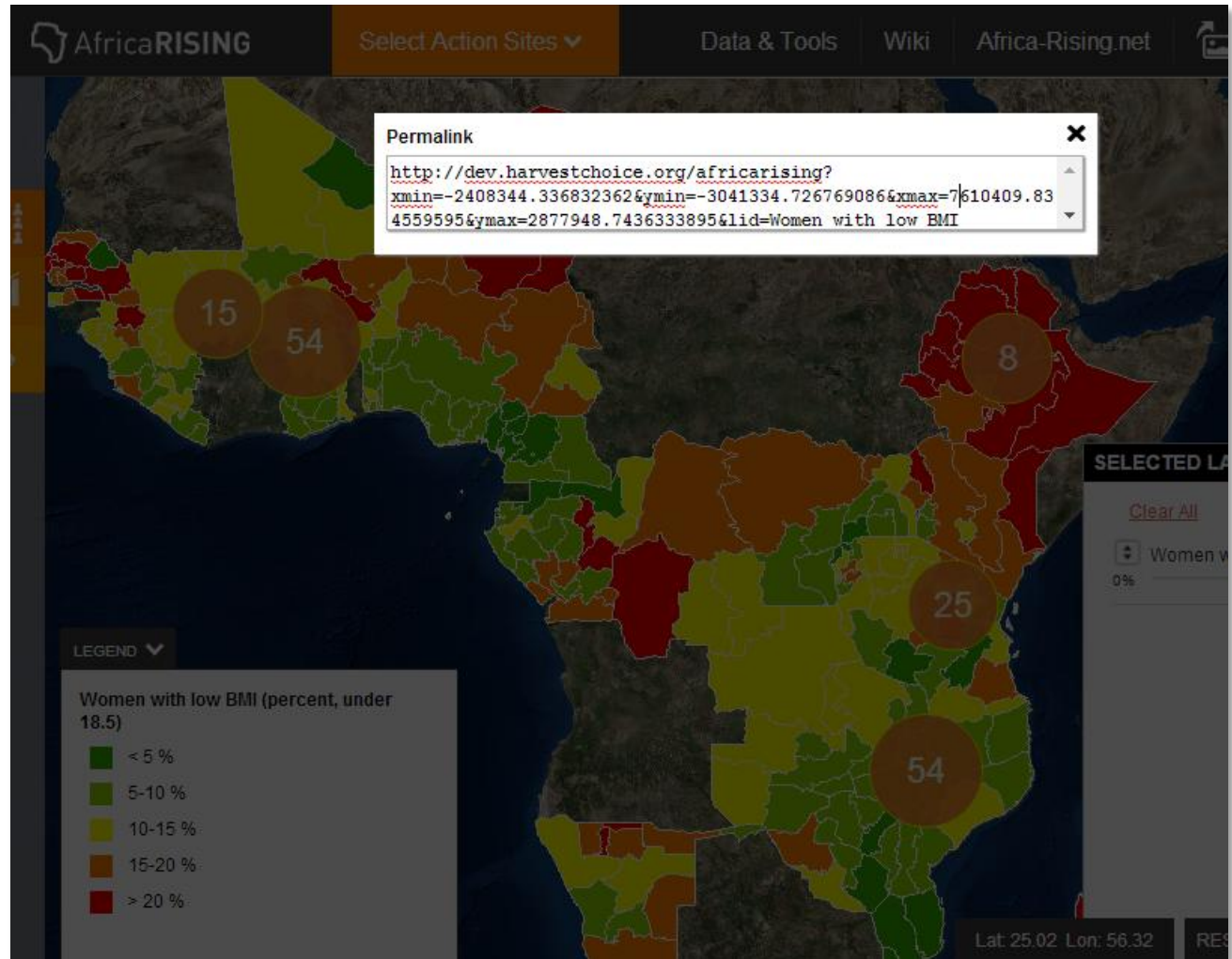
## Header Toolbar: Print and Share

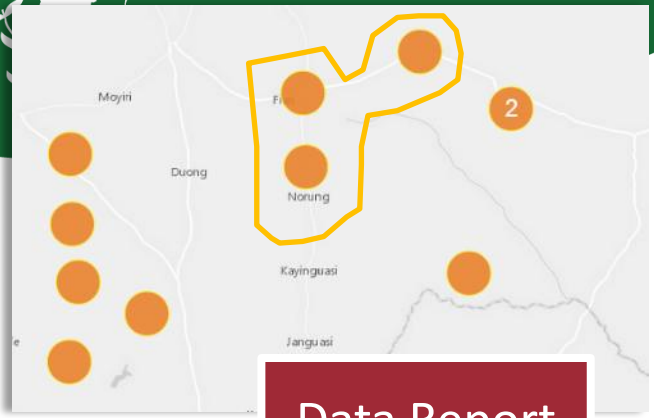
Export to PNG and  
insert all layers and  
legend into your  
own documents.



## Header Toolbar: Print, Share, and Embed

Use the view's  
permalink to share  
an interactive map  
with others via e-  
mail, etc.





# PMMT Monitoring: *Basic Concepts*

**Data Report**

time-series of indicators at the site and/or work package level

1 of 9 selected FtF indicators, or project-specific indicators (e.g. sustainability indices)

**Indicator**

**Indicator**

**Category**

**Category**

Breakdown of indicator by gender, technology, beneficiary, etc.

**Measure**

**Measure**

**Measure**

Recorded value (incl. unit, time, author)



# Report Creation Workflow

Simple step-by-step wizard to generate new report templates:

1. Overview
2. Partners
3. Technologies
4. Value-chains
5. Target sites
6. Indicator list

Research Activities | **Data Reports**

Choose a Data Report | **Create a New Data Report** | Create a New User Account

Please fill out the fields below. Choose a unique descriptive title for this new Data Report (for example, use the name of the work package, research

[1\) Overview](#) | [2\) Partners](#) | [3\) Technologies](#) | [4\) Commodities \(optional\)](#) | [5\) Geography](#) | [6\) Indicators](#) | [7\) Summary](#)

1) Enter a unique descriptive title for this Data Report:

2) Enter a primary contact name:

3) Enter a primary contact e-mail:



## Report Creation Workflow

Simple step-by-step wizard to generate new report templates:

1. Overview
2. Partners
3. Technologies
4. Value-chains
5. Target sites
6. Indicator list

Report Creation Workflow

[Create a Data Report](#) **Create a New Data Report** [Create a New User](#)

Fill in the fields below. Choose a unique descriptive title for this new Data Report (for example, use the name of the target area, or partner).

[1\) Overview](#) **2) Partners** [3\) Technologies](#) [4\) Commodities \(optional\)](#) [5\) Geography](#) [6\) Indicators](#)

Partner:

2) Select Other Research Partners (Optional):

International Food Policy Research Institut...

International Institute for Environment and...

International Institute of Applied Systems ...

International Institute of Development Stu...

International Institute of Tropical Agriculture

International Institute of Tropical Agricultu...

International Livestock Research Institute

International Livestock Research Institute (I...

International Maize and Wheat Improve...

International Potato Center (CIP)

Selected Secondary Partners:

- International Lives...
- International Instit...



# Report Creation Workflow

Simple step-by-step  
wizard to generate  
new report  
templates:

1. Overview
2. Partners
3. Technologies
4. Value-chains
5. Target sites
6. Indicator list



# Report Editing Workflow

Standard FtF data report with jump-list between the 9 indicators retained for Africa RISING.

Report is designed to match AR 5-year span, but can be customized to suit other USAID programs.

Indicator definitions are also customizable.

**Selected Site**  
East and Southern Africa > Tanzania > Kongwa - Chitego

**Research Activities**   **Data Reports**

**WP4: Nutritional status improvement and diversification**

**Indicator**  
   Number of members of producer organizations and community based organizations receiving USG assistance

	2012					
	1st Semester	2nd Semester	1st			
<b>Type of Organization</b>						
Measure	Baseline	Target	Actual	Target	Actual	Target
Disaggregates Not Available	-	-	-	-	-	-
Producer organization	-	-	-	-	-	-
Non-producer-organization CBO	-	-	-	-	-	-
<b>Sex</b>						
Measure	Baseline	Target	Actual	Target	Actual	Target
Disaggregates Not Available	-	-	-	-	-	-



## Report Editing Workflow

Revisions are clearly identified (but cannot be rolled back).

Underlying data may be exported to CSV for further tabulations, or else the entire report may be printed out.

Selected Site  
East and Southern Africa - Malawi - Ntcheu - Amosi

Research Activities **Data Reports** Welcome, administrator! [Log-out](#)

[Choose a Data Report](#) [Create a New Data Report](#) [Create a New User Account](#)

Choose an existing Data Report from the list below. You can revise, update or delete existing entries. To create a Data Report for a new work package, activity, geographic area, or partner, choose "Create a New Data Report" above.

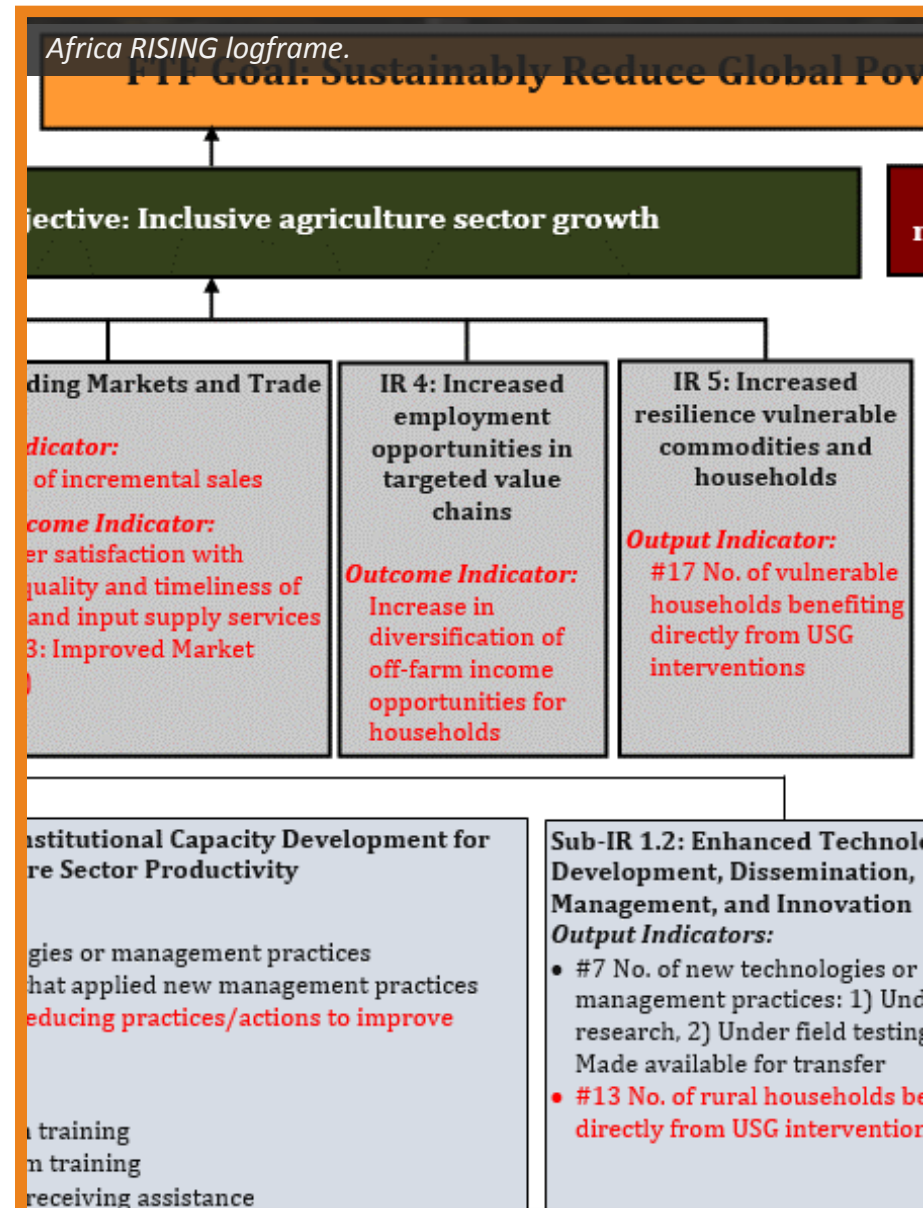
Report:	Last Edited:	Last Edited By:		
<a href="#">Activity 3.1.1. Community mobilization and establishment ...</a>	2014-06-23	administrator	<a href="#">Download CSV File</a>	<a href="#">Export Image</a>
<a href="#">Activity 3.1.2. Farming systems analysis</a>	N/A	N/A	<a href="#">Download CSV File</a>	<a href="#">Export Image</a>
<a href="#">Activity 3.1.3. Inventory innovations and identify entry poi...</a>	N/A	N/A	<a href="#">Download CSV File</a>	<a href="#">Export Image</a>
<a href="#">Activity 3.2.1. Improving cereal-legume-vegetable and crop...</a>	N/A	N/A	<a href="#">Download CSV File</a>	<a href="#">Export Image</a>
<a href="#">Activity 3.2.2. Land management strategies to intensify cer...</a>	N/A	N/A	<a href="#">Download CSV File</a>	<a href="#">Export Image</a>
<a href="#">Activity 3.2.3. Agricultural water management for intensive ...</a>	N/A	N/A	<a href="#">Download CSV File</a>	<a href="#">Export Image</a>





## Not in scope (yet)

- No automated “vertical” roll-up of indicator values (across Africa RISING megasites or at program level)
- Indicators not yet programmatically tied to intermediary results and FtF 1<sup>st</sup> level objectives
- No map visualization of performance indicators across target sites



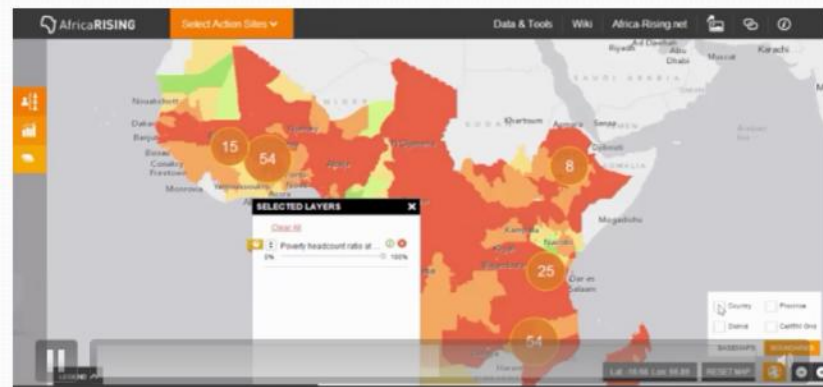


*Interviewing a farmer, 2013.*



## Additional Training Resources

- Series of in-country M&E and PMMT workshops (Ethiopia planned for October-November 2014)
- On-line [PMMT User Guide](#)
- [Video tutorial](#)





## General feedback

	Strongly Agree	Agree	Neutral	Disagree	Strongly Disagree
1. The objectives of the training were clearly defined.	17	13	1	0	0
2. Participation and interaction were encouraged.	17	14	1	0	0
3. The topics covered were relevant to me.	13	14	4	0	0
4. The content was organized and easy to follow.	10	15	2	0	0
5. The materials distributed were helpful.	17	10	3	0	0
6. This training experience will be useful in my work.	14	8	3	0	0
7. The trainer was knowledgeable about the training topics.	16	16	1	0	0
8. The trainer was well prepared.	19	12	0	0	0
9. The training objectives were met.	10	17	3	0	0
10. The time allotted for the training was sufficient.	3	12	6	8	1
11. The PMMT will be <b><u>very useful</u></b> for your research activities	13	11	6	1	0



## Some feedback from PMMT trainees: Lilongwe

*“What additional PMMT-related would you like to see in the future”*

- Demonstrations on actual data, pooling data to make sense of it
- Training dealt on M&E aspect and lacked aspects for general data entry
- We will see when the tool is completed
- FtF indicators
- Retiring existing data about particular variables done by other AR projects
- How the PMMT will be monitored
- Harmonization of indicators
- Integration with other data sets, adding new reports (editing) categories and change indicators
- Conducting data analysis using data in the repository



## Some feedback from PMMT trainees: Arusha

*“What additional PMMT-related trainings would you like to see in the future”*

- Uploading data reports and data management
- Building custom indicator reports
- Deeper understanding of concepts related to the PMMT
- How to edit already submitted reports
- How team members could give feedback to the principal investigator
- Same content but with slower pace to get better understanding of the tool
- To allow participants enter their own data as part of the training
- To allow sharing of information from different work packages so that to absorb the practical benefits of the tool
- How to create new user accounts



Some feedback from PMMT trainees: Chipata

*“What additional PMMT-related trainings would you like to see in the future”*

- Map production and additional tools
- There is urgent need for offline modules due to unreliable connection
- Higher-level results (outcome) indicator tracking
- Data entry application
- Need more data on Southern Africa countries
- How to allow uploading of data from excel
- GIS, which is related to mapping



## Additional feedback

- this was an eye opening training we need more exposure training to get more benefits of the tool
- the PMMT needs to be completed and really in use rather than a theoretical tool”
- the training really reflects what is a key for sustainability of research, with a link on what is already researched though not necessarily published
- one day too short and comprehend and practice data entry, export and editing: optimum time 2 days
- the tool will be very useful, especially when the scientists (WP) who own the data will be willing to share
- the package needs a number of improvements
- there is urgent need for offline modules due to unreliable connection
- customize the application considering poor internet connectivity in Africa
- creation of a tool to allow actors to work offline will be highly welcomed
- the system requires updating the overlays to specify properly the farming systems



# PMMT roadmap

- Add new spatial layers using results from recent **LSMS-ISA surveys** and from **ARBES baseline surveys**
- Provide **vertical roll-ups** of indicators across megasites, and mini program dashboard (?)
- Tighter integration between PMMT and CGIAR report and data catalogs ([CGSpace](#), [AgTrials](#), and [ILRI CKAN](#))
- Allow 3rd-party spatial data sources to be read into and visualized alongside Africa RISING layers
- Build support for **off-line data entry** (possibly using mobile devices)
- Batch import/export of FtF indicators (?)
- Embed [HarvestChoice](#) [MAPPR](#) tools (point/polygon/domain summaries) for advanced spatial analyses





## Looking ahead...

- M&E team soon to contact ESA colleagues who attended the PMMT training to help us update:
  - List of action villages (e.g., Malawi)
  - List of technologies
  - Identify/confirm researchers to whom we should give editing rights to enable them create/edit reports and assign/create new user accounts
  - Please watch out for our email...!



## Conclusions

- FTF indicators are difficult to monitor, but we must report on them, no way out!
- And...we are required to report them appropriately, with no double-counting. USAID is providing guidance on this.
- PMMT was exactly built to make our life easier, so please use it!
- And...please send us feedback should anything be unclear or need to be added/changed. You will hear from us, though.



Good luck!

*Africa Research in Sustainable Intensification for the Next Generation*  
**africa-rising.net**



The presentation has a Creative Commons licence. You are free to re-use or distribute this work, provided credit is given to ILRI.