



# Timeline: The long walk to completion of Africa RISING ESA

**Fred Kizito & Mateete Bekunda**

Africa RISING East and Southern Africa Project Science Outcomes and Impacts Review  
Meeting

24 August 2022, Dodoma, Tanzania





## Threats and barriers

- Poor quality seed and degraded soils
- High labor input
- Inefficient use of resources: water and fertilizers
- Low capacity and big knowledge gaps

## Opportunities

- Better agronomy
- Automated environmental monitoring
- Technological innovation ICT
- Capacity building: Human and Institutional
- Improved Postharvest handling



**Degraded soils**



**Low productivity**



**Low research ability**



**Capacity gaps**



**Productivity**  
Better harvests



**Environment**  
Environmental health



**Economic**  
Better income



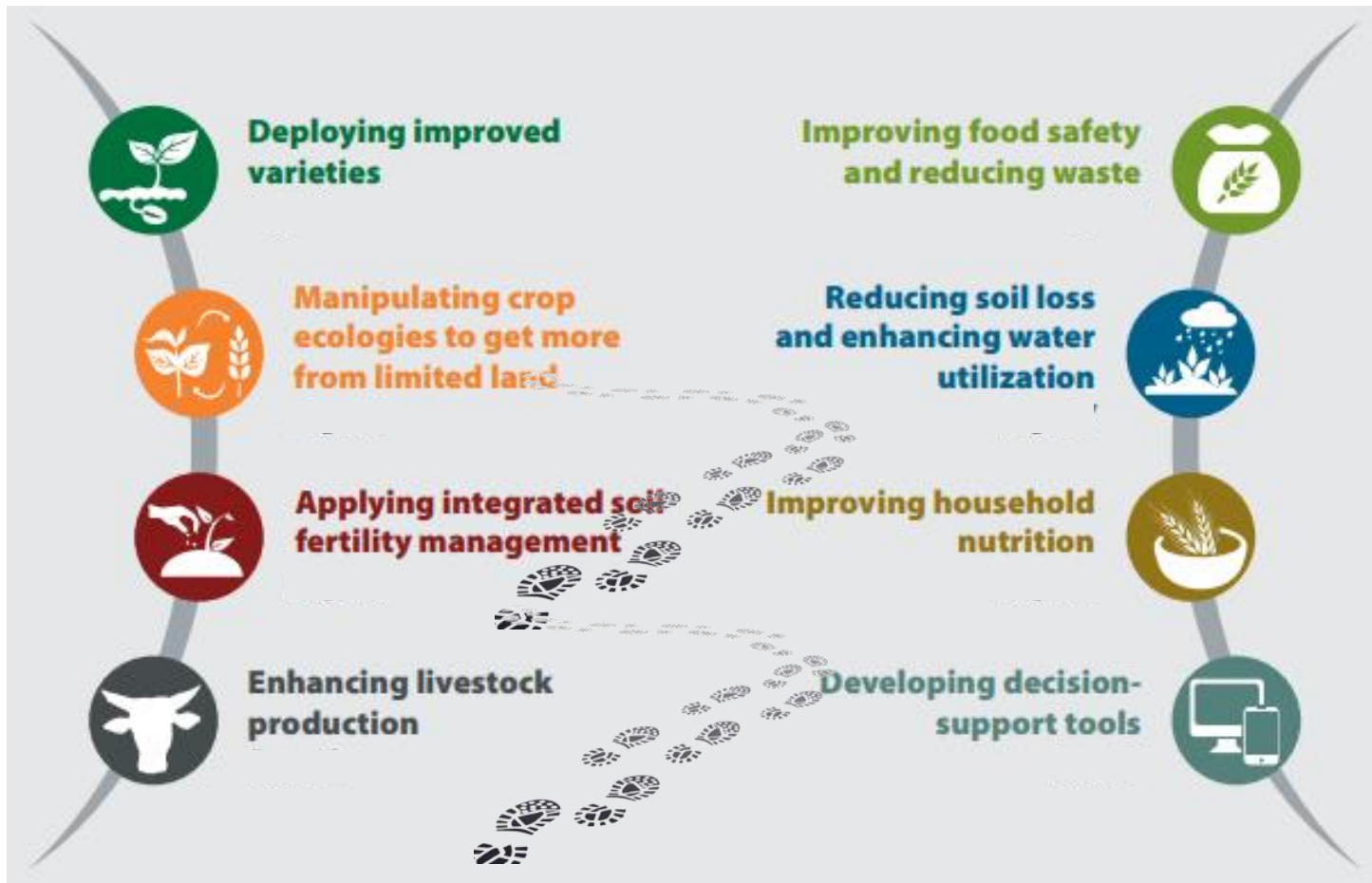
**Human**  
Food security



**Social**  
Information for policy and decision makers



# Eight interwoven themes



# The Path to impact



## PHASE I





## PHASE II

**Oct 2016** Phase II begins

**Jan 2017** Science for Impact event; partners discuss and refine program's vision of success

**Nov 2017** Sustainable intensification assessment framework launched

**Sep 2018** Vision of success: Scale Africa RISING technologies to 392,190 households  
End of Going to Scale Project in Eastern Zambia

**Sep 2019** Vision of success: Scale Africa RISING technologies to 588,149 households

**Aug 2020** NAFKA Scaling Project closeout meeting

**Sep 2020** Vision of success: Scale Africa RISING technologies to 840,365 households

**Sep 2021** Vision of success: Scale Africa RISING technologies to 1,119,438 households

**Feb-Nov 2021** Project Partner update meetings

**Nov 2021** Islands of Peace Project closeout meeting

**Aug 2022** ESA Project closeout meeting



# The Path to impact



# Thank You

*Africa Research in Sustainable Intensification for the Next Generation*

[africa-rising.net](http://africa-rising.net)

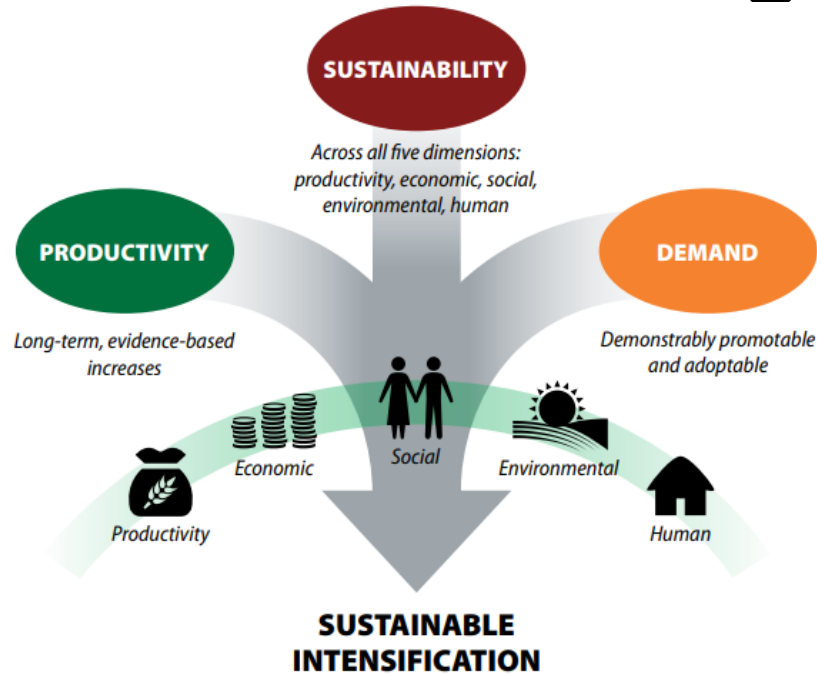


This presentation is licensed for use under the Creative Commons Attribution 4.0 International Licence.



# Pathways to transformative change

The future scaling of sustainable intensification will be built on research-in-development through successful partnerships and an evolving theory of change



‘To achieve the best results, the Africa RISING program has had to channel the wealth of experiences and lessons learned from Phase I and make them into successful implementation strategies and plans for the second phase.’  
Irmgard Hoeschle-Zeledon, 2016





# Pathways to transformative change

## Partnership Dividend

‘We have achieved a lot in terms of identifying best bet technologies in Phase I of Africa RISING. In the second phase we need to adopt more dynamic scaling approaches to ensure these technologies get into the hands of millions of farmers who are counting on us.’ Bernard VanLauwe, 2016



## Research-in-development

‘Research-in-development means that Africa RISING will deliver scientifically validated integrated innovations and knowledge to improve productivity, while the development partners will provide opportunities for scaling these innovations, through their established scaling channels, to the thousands of households in their target regions.’ – Mateete Bekunda, Chief Scientist, Africa RISING East and Southern Africa Project, 2016







# Thank You

*Africa Research in Sustainable Intensification for the Next Generation*

[africa-rising.net](http://africa-rising.net)

**ILRI**  
INTERNATIONAL  
LIVESTOCK RESEARCH  
INSTITUTE



**IITA**  
*Transforming African Agriculture*



This presentation is licensed for use under the Creative Commons Attribution 4.0 International Licence.