

Livestock, Climate and System Resilience (LCSR)

Fiona Flintan

Polly Ericksen

Presentation to SI MFS initiative

October 2021



Outcomes

By 2024, pastoralists and farmers adopt improved governance, management and restoration practices on 500,000 hectares of land used for livestock production, with at least 25% increase in women's active participation in decision-making processes.

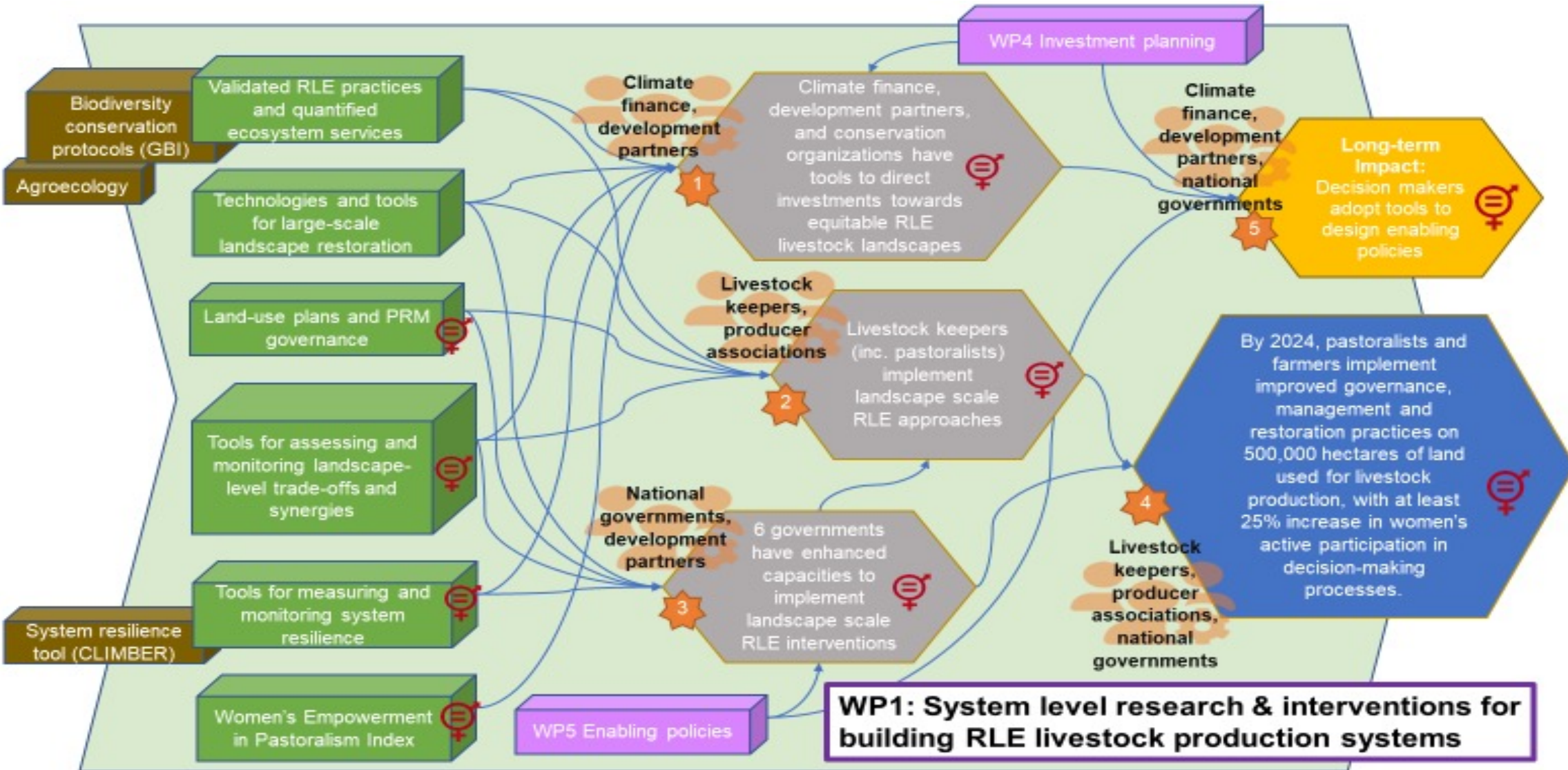
By 2024, at least 300,000 livestock producing households implement resilient, low emissions (RLE) technologies appropriate to their production system, aiming to improve their adaptation to climatic stresses, reduce GHGe intensities and reversing land degradation. Labor-saving RLE technologies and mechanisms to support the potential for women.

By 2024, at least 300,000 livestock producers (50% women and youth), and 13 public and private organizations access bundled climate information, insurance and credit services delivered through public-private partnerships. Women and youth, at least 25-50%, will show an increase in their use of the bundled services.

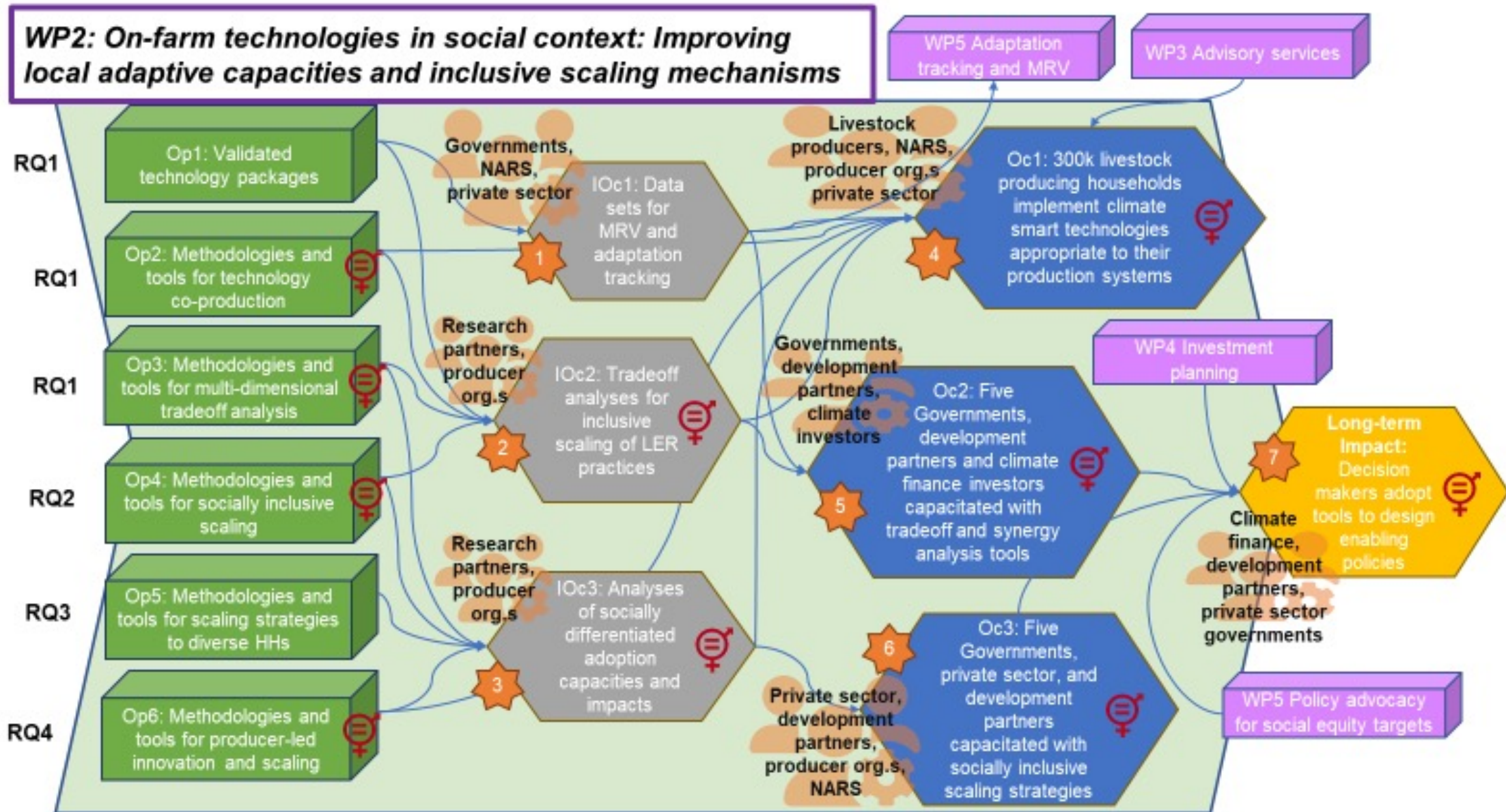
By 2024, impact investors, private sector entities, and international finance institutions plan US\$50 million toward socially inclusive resilience building and/or low emission livestock agrifood systems interventions.

By 2024, international agencies and policymakers use LCSR products to shape at least five policies or investments for stronger RLE and socially-inclusive livestock agrifood systems, including at least three aiming to realize climate change related adaptation or mitigation progress.

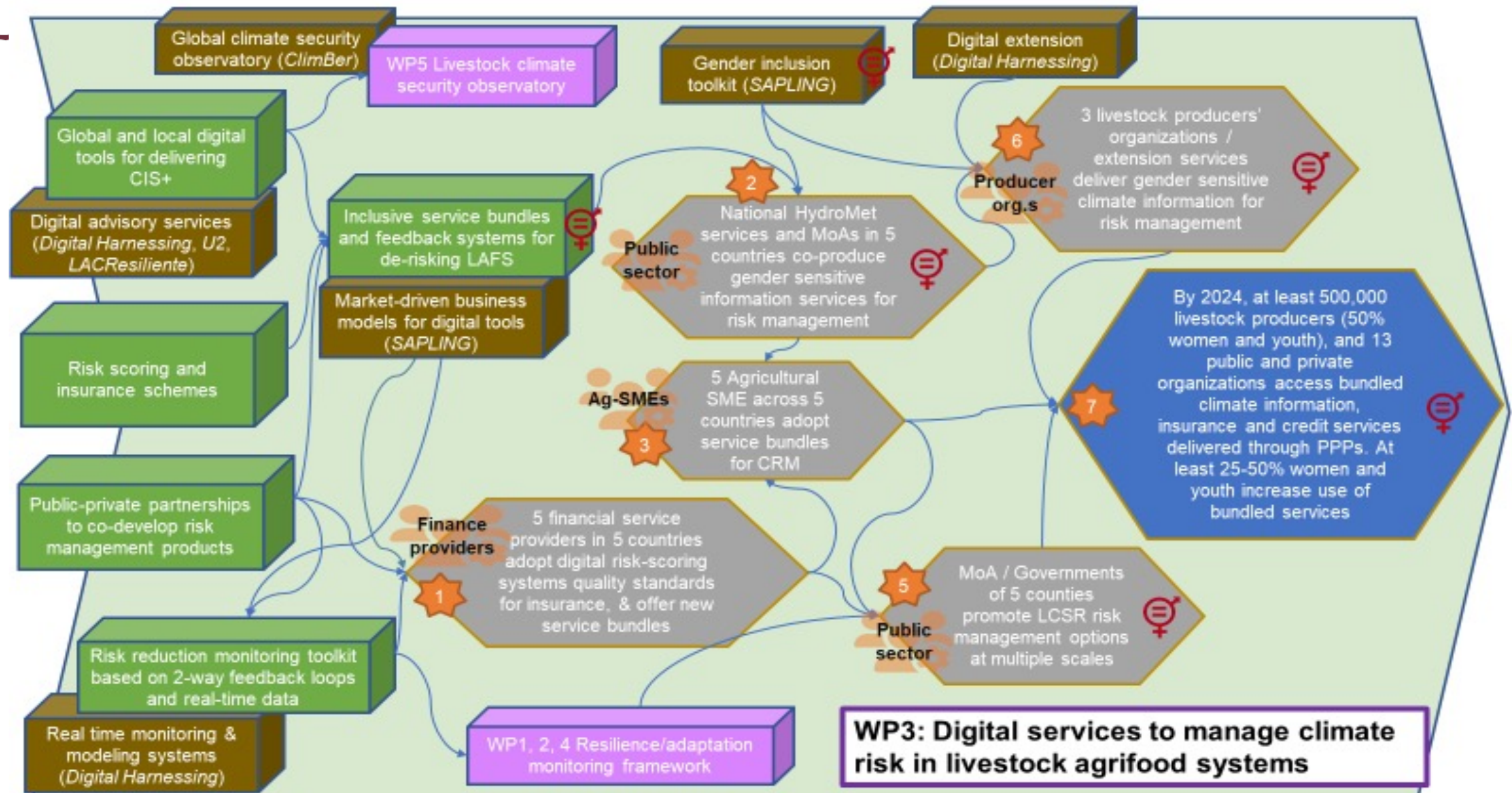
WP1 System level research and interventions



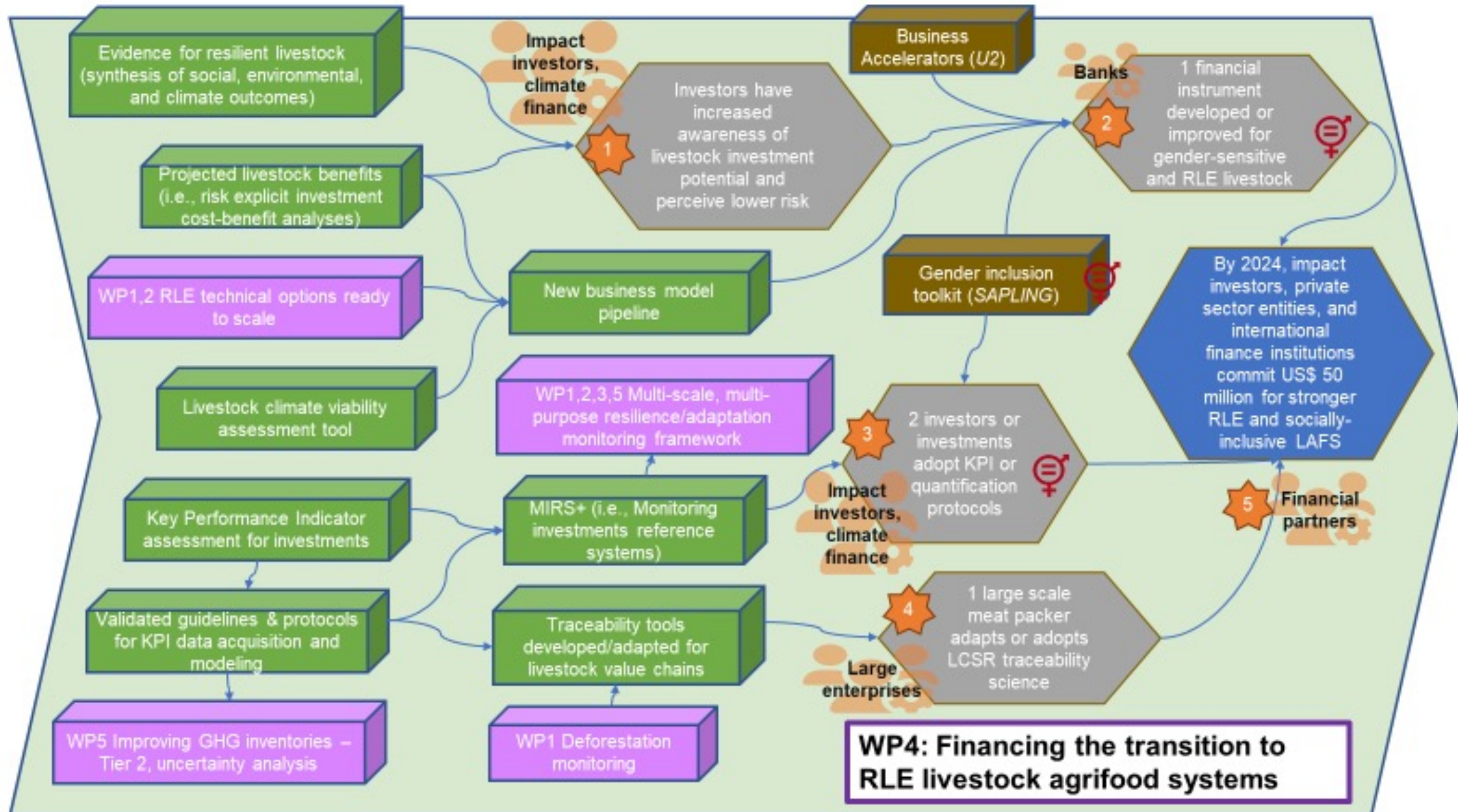
WP2 On-farm technology and capacity development



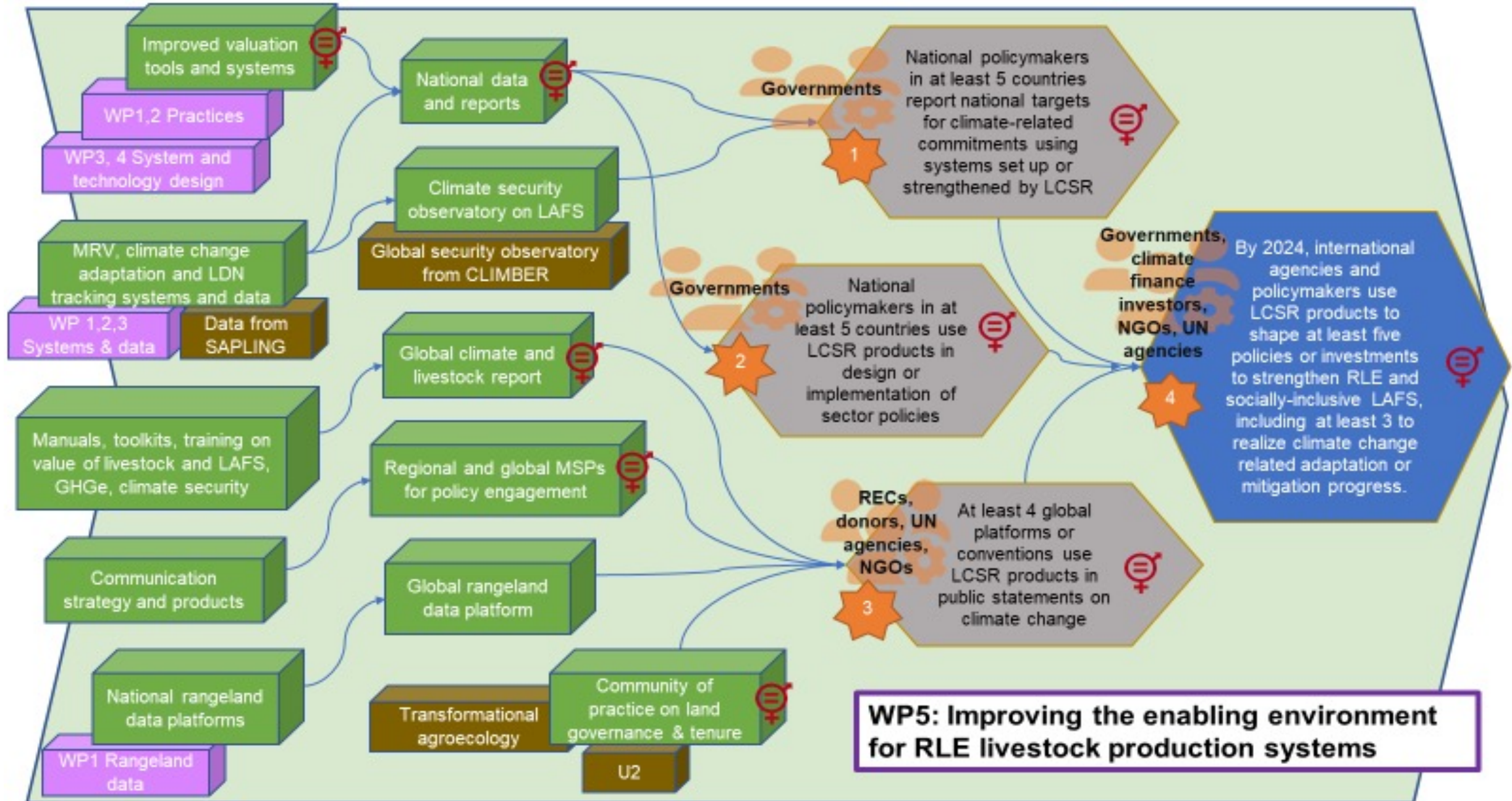
WP3 Digital services to manage climate risk in LAFs



WP4 Financing the transition



WP5 Improving enabling policy environment



Other key points

LSCR aims to work in the following countries: Kenya, Ethiopia and Tanzania; Tunisia; Colombia and Guatemala; Senegal and Mali; and globally.

LSCR builds on research and innovations developed under previous programmes and will look to apply these in different settings/countries and scale-up. Linkages to other initiatives.

LSCR fills a clear demand. LSCR will work closely with government and research partners in-country, international agencies and NGOs, local NGOs and communities.. Working with government and international agencies in particular is important for scaling up.



THANK YOU



About 620 ILRI staff work in Africa and Asia to enhance incomes and livelihoods, improve food security, and reduce disease and environmental degradation. Australian animal scientist and Nobel Prize laureate Peter Doherty serves as ILRI's patron. Organizations that fund ILRI through their contributions to CGIAR make ILRI's work possible. Organizations that partner ILRI in its mission make livestock research for development a reality.



This presentation is licensed for use under the Creative Commons Attribution 4.0 International Licence.

www.ilri.org



Additional slides
